

DATA SHEET

Hycrete360

Utilizing our Hycrete360 program means you'll get maximum protection, a simplified process, and total support from our team.



Concrete Technologies

Hycrete360 (formerly System W) is a multi-pronged approach to concrete construction that eliminates the need for membranes. At the core is Hycrete's patented revolutionary admixture technology, a chemistry that transforms the porous, hard sponge of ordinary concrete into hydrophobic concrete. Hycrete Endure WP transforms into a water-insoluble polymer when mixed into concrete. That polymer works on the molecular level to block pores that are penetrable by damaging water and corrosive salts. It also bonds to the surface of steel reinforcement within concrete, creating a protective layer that wards off corrosion. The result is hydrophobic, waterproof concrete.



Engineering Design Services

From start to finish, Hycrete's world-class technical engineering team is involved, providing guidance on construction details, mix designs, and Hycrete admixtures.



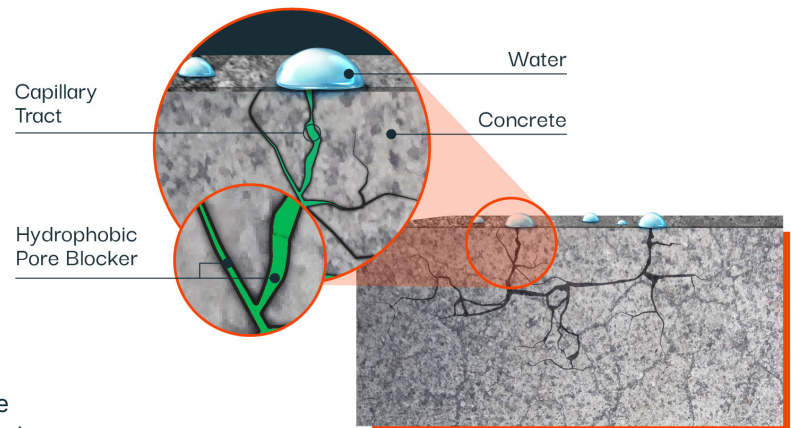
On-Site Construction Guidance

Hycrete's field service team makes the difference between waterproof concrete and waterproof construction. This level of service is unique to Hycrete. No claim to a waterproof structure would be complete without it.



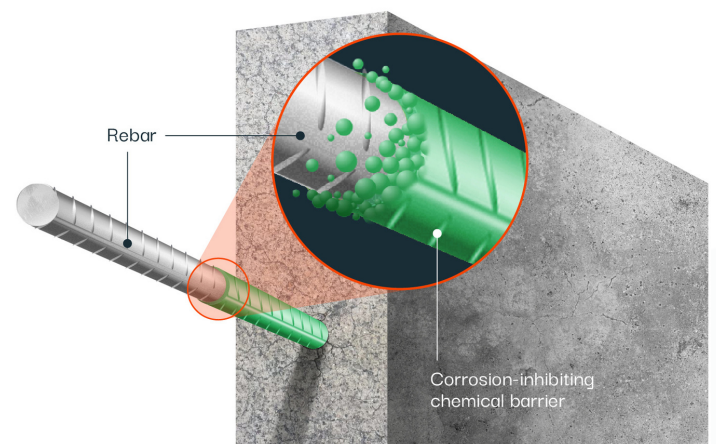
Performance-Based Warranty Protection

After a dry structure is delivered – Hycrete backs it all up with a 10-year performance-based warranty. Since the Hycrete360 system approach simplifies waterproofing so dramatically, you have only one person to call: the finger-pointing of traditional waterproofing is eliminated.



USES AND APPLICATIONS

- LEED Projects
- Parking Garages
- Podium and Plaza Decks
- Commercial Sub-Grade Walls and Slabs
- Retaining Walls
- Underground Vaults
- Retaining Walls
- Water Tanks
- Water Treatment Facilities
- Tunnels
- Aquatic Centers, Marinas and Zoos
- Swimming pools

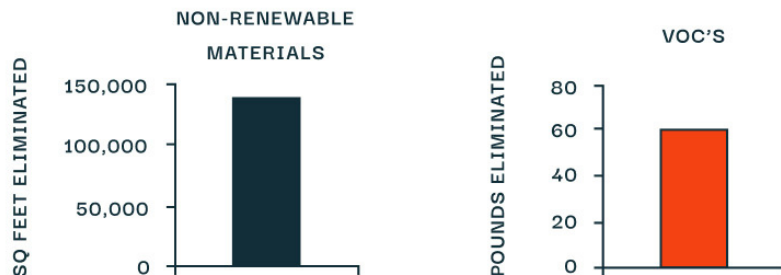


A GREENER BUILDING

An environmentally friendly, water-soluble Cradle to Cradle certified product, Hycrete Endure WP transforms into a water-insoluble polymer when mixed into concrete. The Cradle to Cradle concept is at the core of Hycrete's solutions. This approach models human industry on nature's processes in which materials are viewed as nutrients circulating in healthy, safe metabolisms. Put simply, it is a holistic economic, industrial and social framework that seeks to create systems that are not just efficient but essentially waste free. In Hycrete's case, this means using environmentally safe and healthy materials, designing for material reutilization, using renewable energy and energy efficiency in manufacturing and the efficient use of water in manufacturing.



SUSTAINABILITY PERFORMANCE



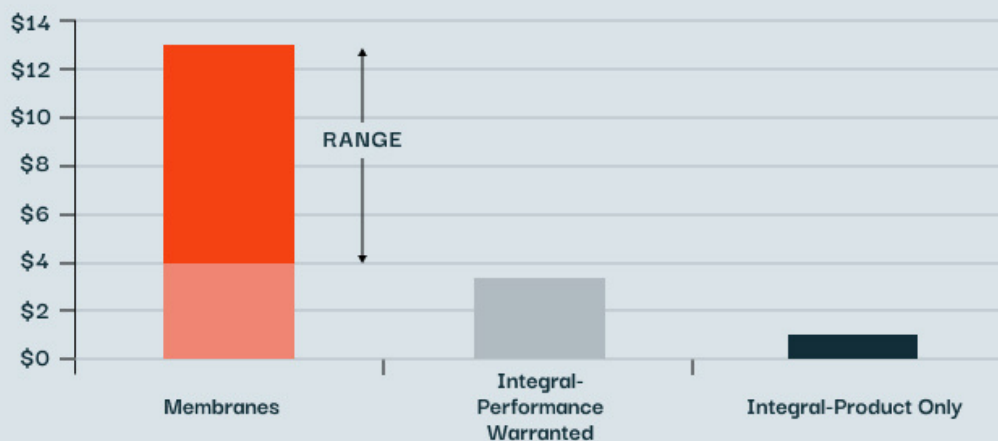
Hycrete Eliminates Environmentally Negative Impacts

PRODUCT FEATURES

- Cradle to Cradle certified by MBDC
- NSF/ANSI 61 - approved for use in potable water tanks
- Compatible with standard admixture metering equipment
- ISO 14021 compliant - recycled content in accordance with Type II environmental labeling; applicable for LEED Materials and Resources Credit 4.1/4.2 - Recycled Content

Comparative Pricing per Square Foot

(for 10" thick wall, a general average)



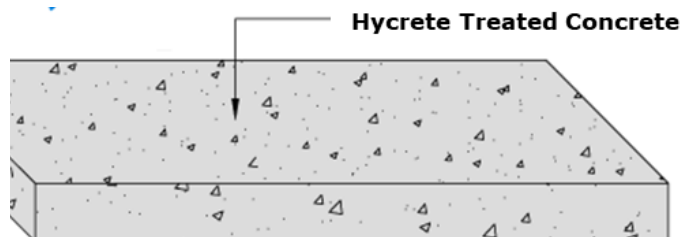
On Average, Membrane-Free Integral Waterproofing is 30% Lower

A BETTER SOLUTION

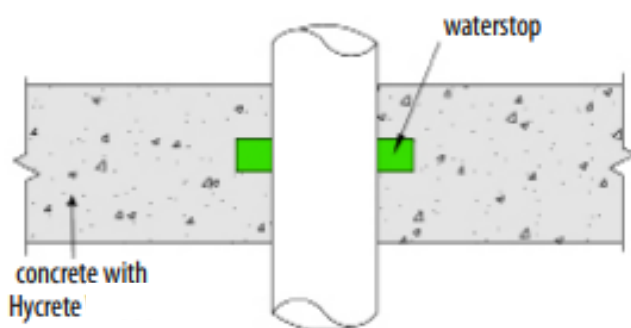
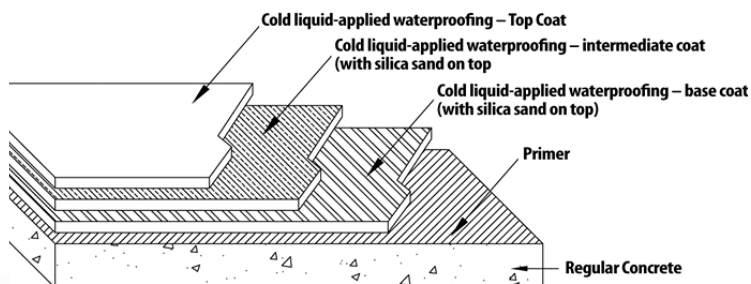


Hycrete360

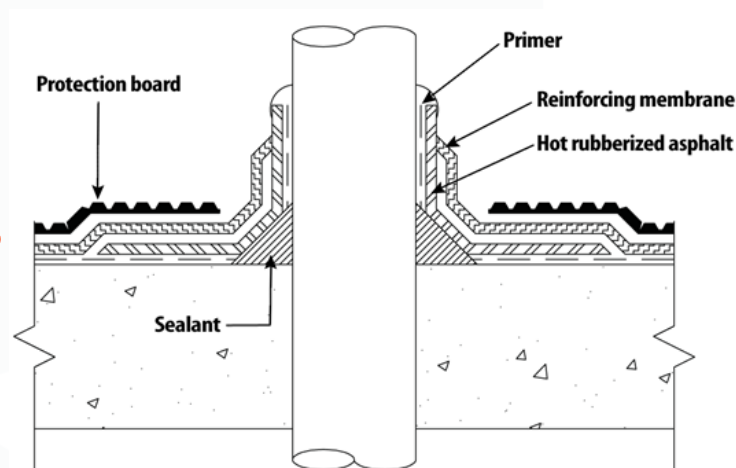
Membrane System



VS



VS



Hycrete, Inc. | 14 Spielman Rd | Fairfield, NJ 07004 USA | Phone: (+1) 201.386.8110 | Fax: (+1) 201.386.8155 | www.hycrete.com

Copyright © 2022 Hycrete, Inc. All rights reserved. Hycrete, Inc. and the Hycrete logo are trademarks of Hycrete, Inc.

Hycrete warrants that its products are free from manufacturing defects and, when applied in accordance with the current specification and application instructions, will perform as so stated in its product literature.

Disclaimer: The information and recommendations relating to the application and end-use of Hycrete Products are based on data that Hycrete, Inc. considers to be true and accurate and is to be used for the users' consideration, examination, and confirmation, but Hycrete, Inc. does not warrant the results acquired. Materials, compositions, and site environments are varied, and no warranty can be implied from this information or from any written recommendations, or from any other offered guidance. All orders are accepted subject to Hycrete, Inc.'s terms of sale and delivery. Copies of the most recent version of the Product Data Sheet should always be referenced and are available upon request. See warranty sheet for warranty details (available upon request). Protected under one or more of the following U.S. patents: 7,261,923; 7,381,252; 7,407,535; 7,498,090; 7,513,948 and 7,670,415. Additional patents pending and/or issued in the U.S. and internationally.

1002002-DEC22