

DATA SHEET

Hycrete Endure WP

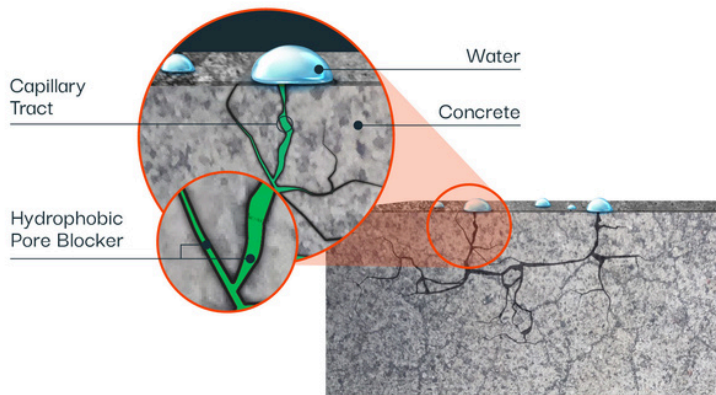
For Maximum Waterproofing Protection in Concrete Mixes

PRODUCT DESCRIPTION

Hycrete Endure WP (formerly W1000), Hycrete's patented flagship concrete waterproofing admixture, dramatically reduces water ingress through concrete. Ordinary concrete absorbs water and dissolved salts through its network of pores, leading to water infiltration and corrosion of steel reinforcement. Hycrete Endure WP reduces absorption to 1% or lower and forms a protective coating around steel reinforcement. Less water and fewer chlorides are able to penetrate the concrete and the reinforcement has enhanced protection from corrosion. Hycrete Endure WP delivers consistent and reliable performance and is easy to use. Hycrete Endure WP is an environmentally responsible, Cradle to Cradle™ certified product. Using Hycrete Endure WP allows owners and builders to have the comfort of knowing their investment /project remains secure against one of nature's most damaging elements ...water.

USES AND APPLICATIONS

- Included in Hycrete360; see separate data sheet for Hycrete360.
- Extra protection for walls and slabs
- Above and below grade construction
- Water containment reservoirs
- Sewage and water treatment plants
- Secondary containment structures
- Underground vaults
- Tilt-up panel walls
- Pre-cast components
- Architectural water features and fountains
- Bridges, dams and highway infrastructure
- Aquatic centers, marinas and zoos
- Swimming pools

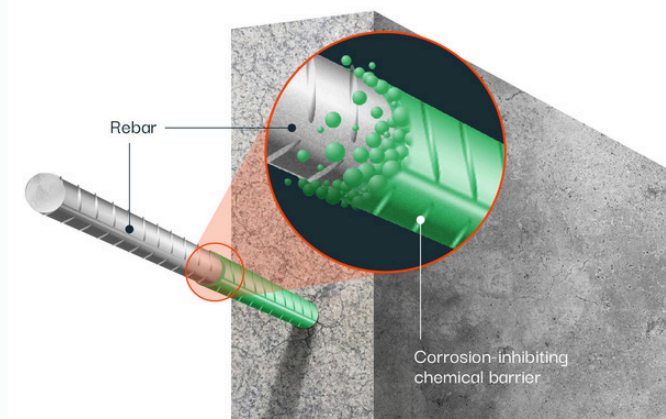


KEY BENEFITS

- Maximum waterproofing protection in concrete: less than 1% water absorption.
- Corrosion protection; protective coating formed around steel reinforcement.
- Neutral concrete set time performance, even in high fly ash and GGBS (slag) mixes.
- Resists hydrostatic pressure.
- Can heal cracks up to 0.4mm.
- Consistent performance and verifiable dosage.
- Easy to use; no additional labor required
- Safe to use.

PRODUCT FEATURES

- Cradle to Cradle™ certified by MBDC
- NSF/ANSI 61 - approved for use in potable water tanks.
- Hycrete Endure WP meets/exceeds the requirements for ASTM C494 Type S admixtures.
- Compatible with standard admixture metering equipment.
- ISO 14021 compliant - recycled content in accordance with Type II environmental labeling; applicable for LEED Materials and Resources Credit 4.1/4.2 - Recycled Content.

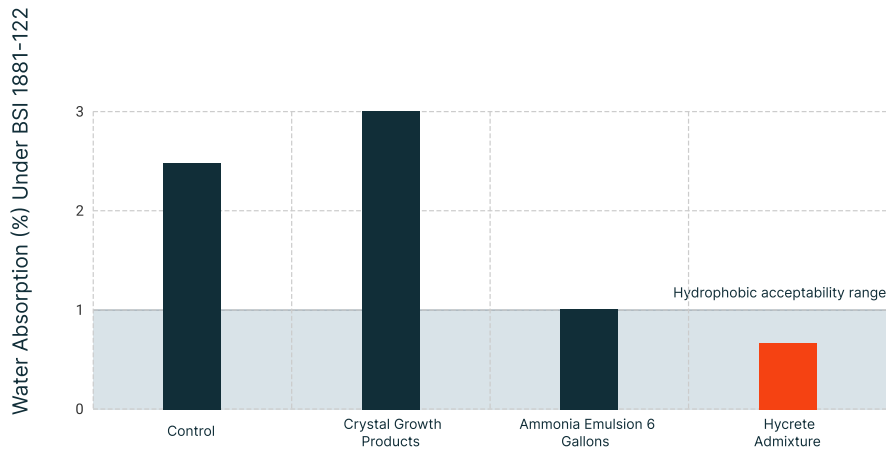


PRODUCT PERFORMANCE*

| | | |
|-----------------------------------|------------------------------------|---|
| Water absorption | BSI 1881-122 | Less than 1% absorption |
| Permeability/hydrostatic pressure | DIN 1048 BS EN 12390-8 | Passes DIN 1048; up to 70% reduction in permeability |
| Crack healing | ASTM C597 | Concrete with Hycrete fosters faster and 100% complete healing compared to untreated control |
| Set time | ASTM C403 | Set neutral |
| Type S Admixtures | ASTM C494 | Meets/Exceeds |
| Drying shrinkage | ASTM C157 | Neutral to the control |
| Slump | ASTM C143 | Neutral |
| Workability | N/A | Excellent |
| Effect on concrete color | N/A | None |
| Compressive strength | ASTM C39 | Water/cement ratios may need to be lowered to account for possible, minor strength decreases associated with some materials. Perform trial mixes. |
| Potable water | NSF/ANSI 61 | Approved for use in potable water tanks 50,000 gallons or greater and pipes 84" in diameter and greater |
| Adhesion | ASTM C1583, ASTM C1072, ASTM D3359 | Neutral; no adverse effect on bond with concrete |

*All benefits and results are based on actual test results. Results may vary according to concrete mix designs, Hycrete Endure WP dosage, or other factors.

WATERPROOFING PERFORMANCE



South Carolina independent Lab Testing: 40/60 Structural Mix, 0.40 W/C 611
 Type I-II Cement Polycarboxylate Superplasticizer

GENERAL PROPERTIES AND CHARACTERISTICS

| | |
|---|--|
| Physical characteristics: Form: Liquid Specific gravity: 1.05 +-0.05 Chloride content: Nil pH: 8.5 | Compatibility: <ul style="list-style-type: none"> • Most concrete admixtures • Most Portland cements or replacements including fly ash and GGBS (slag) • Shotcrete mixes and application • Most surface-applied sealants and external membrane protection systems |
| Recommended dosage: 1.0 U.S. gallon per cubic yard of concrete (5.0 liters per cubic meter) | |
| Usage guidelines: <ul style="list-style-type: none"> • Superplasticizer at the manufacturer’s recommended rate and appropriate for the placement requirements of the project. • Cementitious Content: The cementitious content of concrete containing Hydrophobic Concrete Admixture will not be less than 550 lbs/yd3 (325 kg/m3) with up to 15% fly ash or 50% slag maximum. • Water-Cement Ratio: 0.42 maximum. Water content of Hydrophobic Concrete Admixture and other admixtures to be included in the water-to cementitious ratio. • Please remove an equal amount of mix water as dosage of Hycrete admixture to maintain the mix design water to cement ratio. Example: Hycrete dosage 1 gallon per cubic yard - mix water removed 1 gallon. | |
| Packaging: 1 gallon bottles; 5 gallon pails; 55 gallon drums; 275 gallon totes; bulk tanker delivery | |
| Storage and handling: Store above 32°F (0°C) and below 120 °F (48 °C). Slight flocculation can occur over time due to pH reductions. Such flocculation does not affect product performance | |

Notes

- For air-entrained concrete mixes speak to your local Hycrete Rep for proper mix design.
- User should perform trial mixes prior to placement and make necessary adjustments to the mix design as needed.
- If considering dosages other than recommended dosage contact Technical Services before use.

Safety

- Hycrete Endure WP (formerly W1000) is a water-based material and should not be swallowed or come into contact with skin or eyes. Wear suitable protective gloves and goggles. If material comes in contact with the skin, wash immediately with soap and water. In case of contact with eyes, rinse immediately with sufficient water and seek medical support. If swallowed, seek immediate medical attention. For further information please consult the Material Safety Data Sheet.

Related Documents

- Hycrete Mixing Instructions
- Hycrete Material Safety Data Sheet - Hycrete Endure WP
- For air-entrained concrete mixes speak to your local Hycrete Rep for proper mix design.



Hycrete, Inc. | 14 Spielman Rd | Fairfield, NJ 07004 USA | Phone: (+1) 201.386.8110 | Fax: (+1) 201.386.8155 | www.hycrete.com

Copyright © 2022 Hycrete, Inc. All rights reserved. Hycrete, Inc. and the Hycrete logo are trademarks of Hycrete, Inc.

Hycrete warrants that its products are free from manufacturing defects and, when applied in accordance with the current specification and application instructions, will perform as so stated in its product literature.

Disclaimer: The information and recommendations relating to the application and end-use of Hycrete Products are based on data that Hycrete, Inc. considers to be true and accurate and is to be used for the users’ consideration, examination, and confirmation, but Hycrete, Inc. does not warrant the results acquired. Materials, compositions, and site environments are varied, and no warranty can be implied from this information or from any written recommendations, or from any other offered guidance. All orders are accepted subject to Hycrete, Inc.’s terms of sale and delivery. Copies of the most recent version of the Product Data Sheet should always be referenced and are available upon request. See warranty sheet for warranty details (available upon request). Protected under one or more of the following U.S. patents: 7,261,923; 7,381,252; 7,407,535; 7,498,090; 7,513,948 and 7,670,415. Additional patents pending and/or issued in the U.S. and internationally.

1002002-DEC22