

PARKING STRUCTURES

Sound Transit Park and Ride Numerous Locations Throughout Washington

Overview

11 completed parking structures for Sound Transit and King County.

Construction Type: Post-Tensioned Deck

Owner: Sound Transit

Owner: King County

Summary

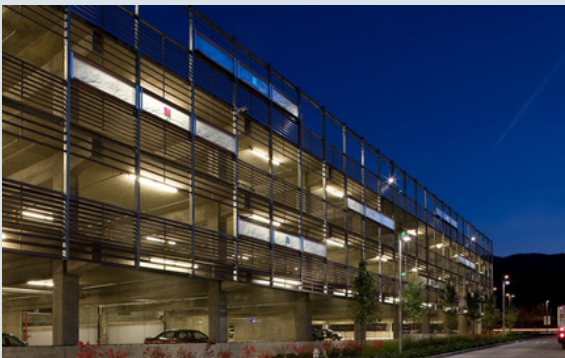
Hycrete was used in the concrete to waterproof the decks and protect them from corrosion. Because Hycrete is integral and permanent, the owner has a durable solution and has been able to eliminate costly maintenance, saving millions of dollars.

Sound Transit and King County have used Hycrete in eleven similar parking projects in the Northwest since 2000.

Solution

Hycrete360 (formerly System W) offered superior performance to other waterproofing systems, was more cost-effective and accelerated the construction schedule. Using Hycrete360 eliminated the need for waterproofing membranes saving approximately \$150,000 per parking structure in upfront material costs.

Parking Structure Locations: Bellevue, Issaquah, Redmond, Kirkland, Lynwood, Federal Way, Puyallup, Everett, and Burien.





“

Hycrete has saved me a lot of money by greatly reducing maintenance requirements. Because we have a long-term lease, it is critical that our solution protects the structure over the long-term and limits maintenance – Hycrete achieves both.

”

Owner's Representative



“

I would recommend Hycrete to any contractor looking for integral waterproof concrete.

”

Mike Jones, Superintendent,
PCL Construction Services, Inc



PARKING STRUCTURES

Kings County Hospital Center Parking Garage Brooklyn, New York

Overview

1500 car garage with one full level below-grade and the second deck half exposed.

Construction Type: Post-Tensioned Deck

Owner: Clarkson Avenue Garage LLC | **GC:** Clearview Development

Summary

The parking garage at Kings County Hospital has both above and below-grade decks. The below-grade walls are exposed to soil high in chlorides, and the exposed parking deck will receive periodic de-icing using road salts. The developer of the project has a 40-year lease of the structure and required a long-term solution that would minimize maintenance requirements.

Solution

Hycrete's integral system was used to replace traffic coatings and sealers, drastically reducing maintenance and saving the owner money. Hycrete provided maximum corrosion protection throughout the concrete structure.

Master Park SeaTac Parking Garage SeaTac, Washington

Overview

Six level parking garage adjacent to SeaTac Airport with over 1,000 parking spaces.

Construction Type: Post-Tensioned Deck

Owner: Mada, LLC | **GC:** PCL Construction Services, Inc.

Summary

The owners of Master Park parking garage needed waterproofing and corrosion protection capable of withstanding accumulation of snow and frequent rain. A durable solution requiring minimal maintenance and downtime was also essential to the project goals.

Solution

Hycrete's integral system was used to replace traffic coatings and sealers, drastically reducing maintenance and saving the owner money. Hycrete provided maximum corrosion protection throughout the concrete structure, saving the owner more than \$2 million over the 30-year lifespan of the structure by replacing coatings and sealers.