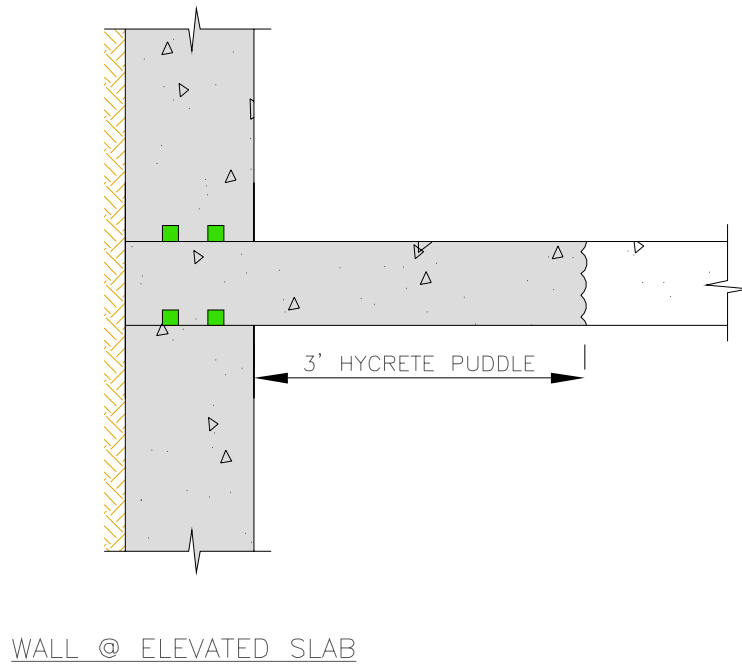
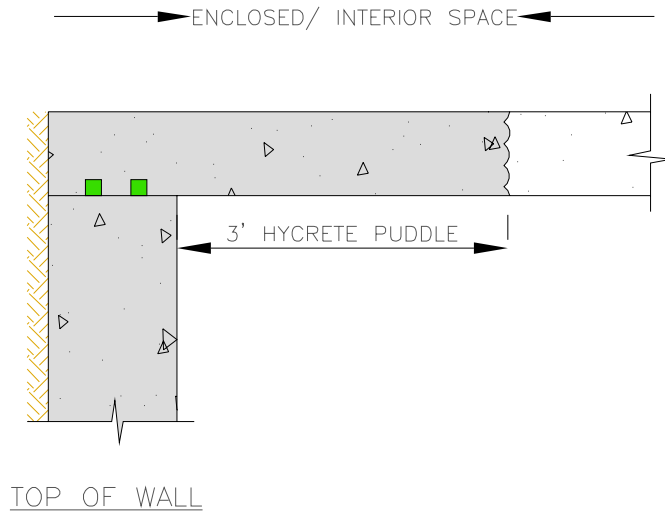



 HYDROPHILIC WATERSTOP

 HYCRETE CONCRETE



Hycrete details illustrate generic construction guidelines. They are intended for use by design/construction professionals, to assist in developing project-specific details. These should be modified where necessary to accommodate individual project conditions. The user maintains all responsibility for verifying the applicability and suitability of the technical service or information provided. Contact a Hycrete technical professional for assistance in project-specific requirements. Always refer to project specifications and local building codes for any special requirements.

© 2009 Hycrete, Inc. All rights reserved. The right to utilize Hycrete details for commercial purposes is granted exclusively to contractors, architects, quantity surveyors, engineers, waterproofing consultants, and specification writers. Hycrete™ is a registered trademark of Hycrete, Inc.

	HYCRETE360, HYCRETE ENDURE WP, HYCRETE ENDURE CP	
	DRAWING TITLE: FOUNDATION DETAIL	
14 SPIELMAN RD, FAIRFIELD NJ, 07004, 201-386-8110 WWW.HYCRETE.COM	DRWN BY:FAZAL	DRAWING NUMBER: 003-B
	CHKD BY:NHM	NTS