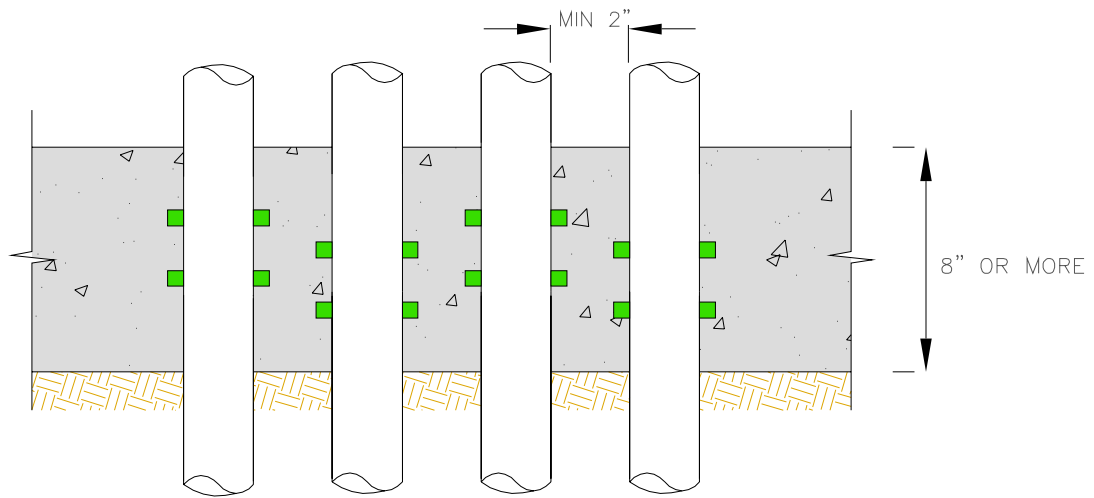
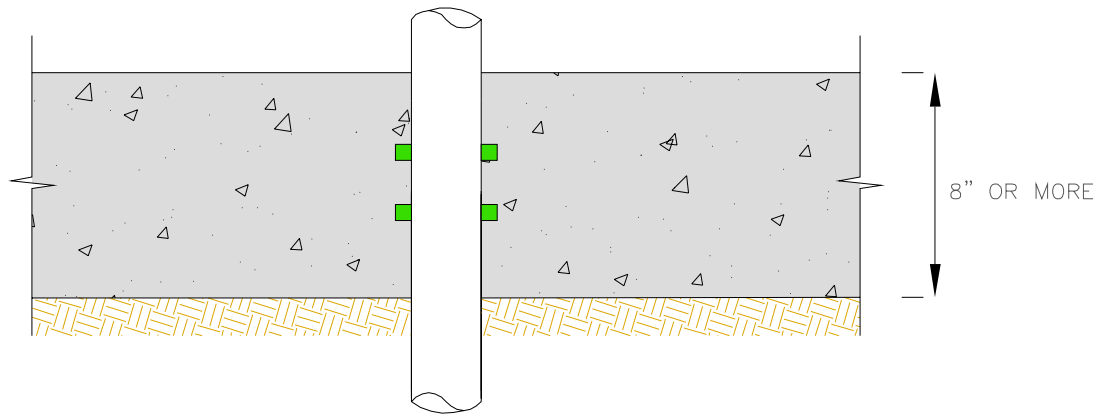


 HYDROPHILIC WATERSTOP


 HYCRETE CONCRETE



CONGESTED PENETRATIONS

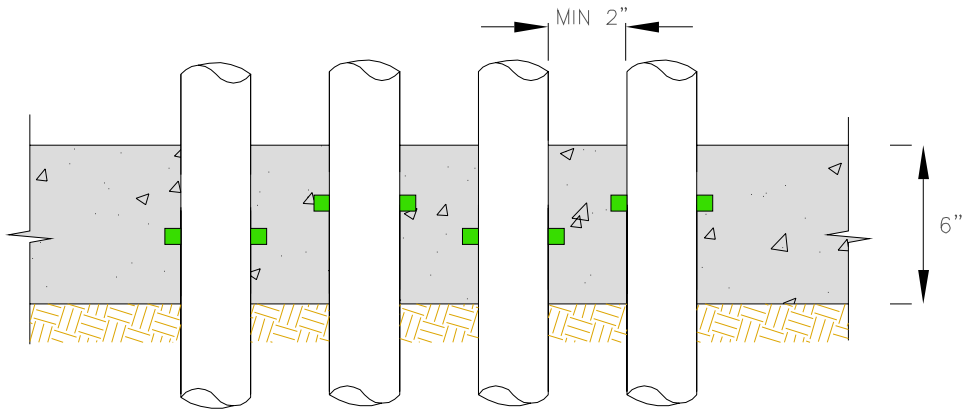
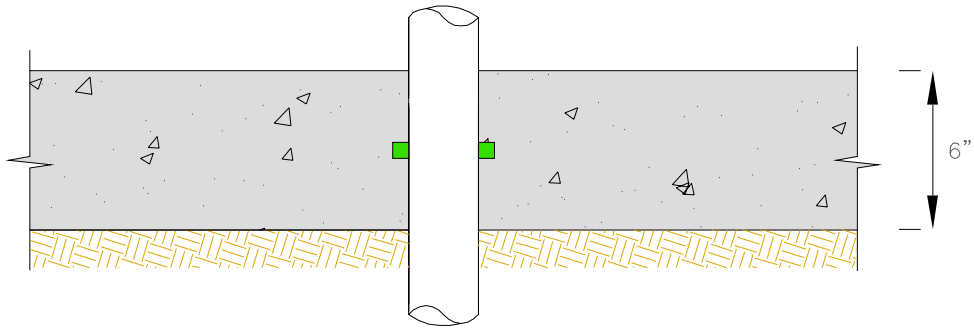
Hycrete details illustrate generic construction guidelines. They are intended for use by design/construction professionals, to assist in developing project-specific details. These should be modified where necessary to accommodate individual project conditions. The user maintains all responsibility for verifying the applicability and suitability of the technical service or information provided. Contact a Hycrete technical professional for assistance in project-specific requirements. Always refer to project specifications and local building codes for any special requirements.

© 2009 Hycrete, Inc. All rights reserved. The right to utilize Hycrete details for commercial purposes is granted exclusively to contractors, architects, quantity surveyors, engineers, waterproofing consultants, and specification writers. Hycrete™ is a registered trademark of Hycrete, Inc.

	HYCRETE360, HYCRETE ENDURE WP, HYCRETE ENDURE CP	
	DRAWING TITLE: SLAB ON GRADE PENETRATION	
	14 SPIELMAN RD, FAIRFIELD NJ, 07004 201-386-8110 WWW.HYCRETE.COM	
	DRWN BY:FAZAL	DRAWING NUMBER: 001
	CHKD BY:NHM	NTS

 HYDROPHILIC WATERSTOP


 HYCRETE CONCRETE



CONGESTED PENETRATIONS

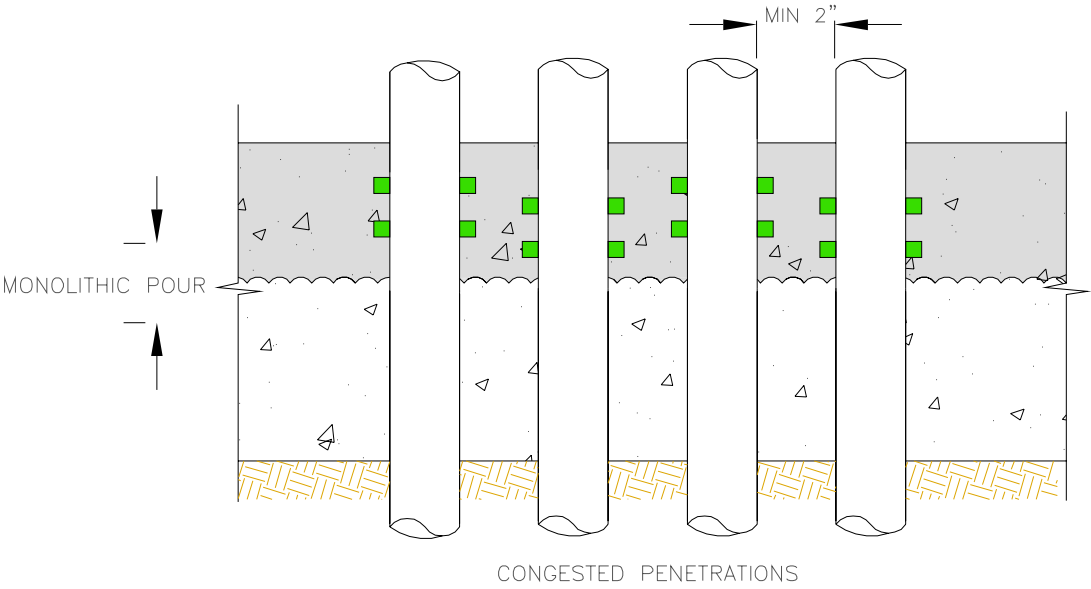
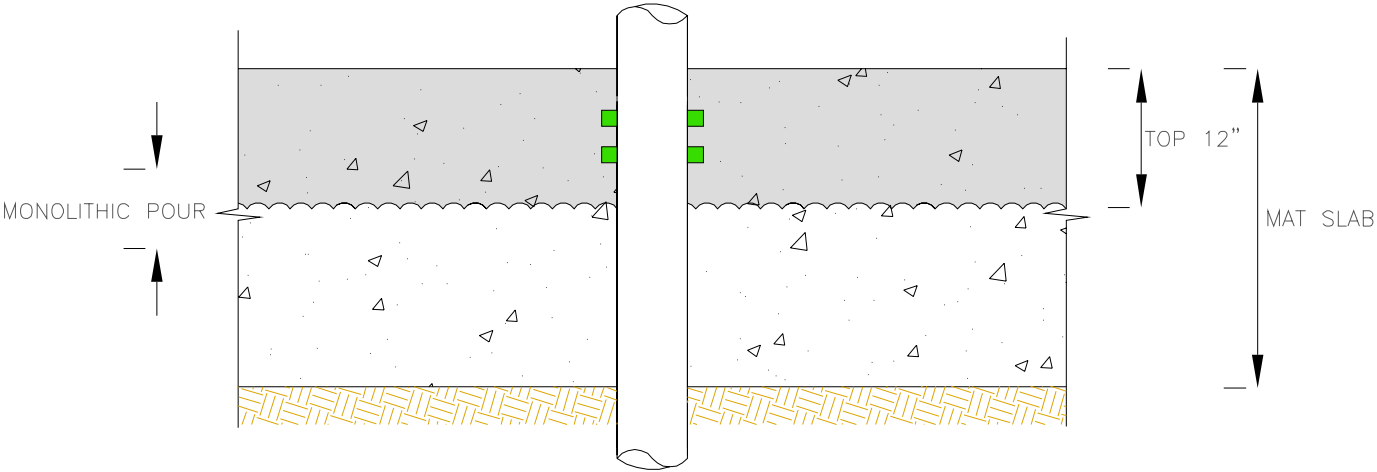
Hycrete details illustrate generic construction guidelines. They are intended for use by design/construction professionals, to assist in developing project-specific details. These should be modified where necessary to accommodate individual project conditions. The user maintains all responsibility for verifying the applicability and suitability of the technical service or information provided. Contact a Hycrete technical professional for assistance in project-specific requirements. Always refer to project specifications and local building codes for any special requirements.

© 2009 Hycrete, Inc. All rights reserved. The right to utilize Hycrete details for commercial purposes is granted exclusively to contractors, architects, quantity surveyors, engineers, waterproofing consultants, and specification writers. Hycrete™ is a registered trademark of Hycrete, Inc.

	HYCRETE360, HYCRETE ENDURE WP, HYCRETE ENDURE CP	
	DRAWING TITLE: SLAB ON GRADE PENETRATION	
14 SPIELMAN RD. FAIRFIELD NJ. 07004. 201-386-8110 WWW.HYCRETE.COM	DRWN BY:FAZAL	DRAWING NUMBER: 001-A
	CHKD BY:NHM	NTS


HYDROPHILIC WATERSTOP

HYCRETE CONCRETE



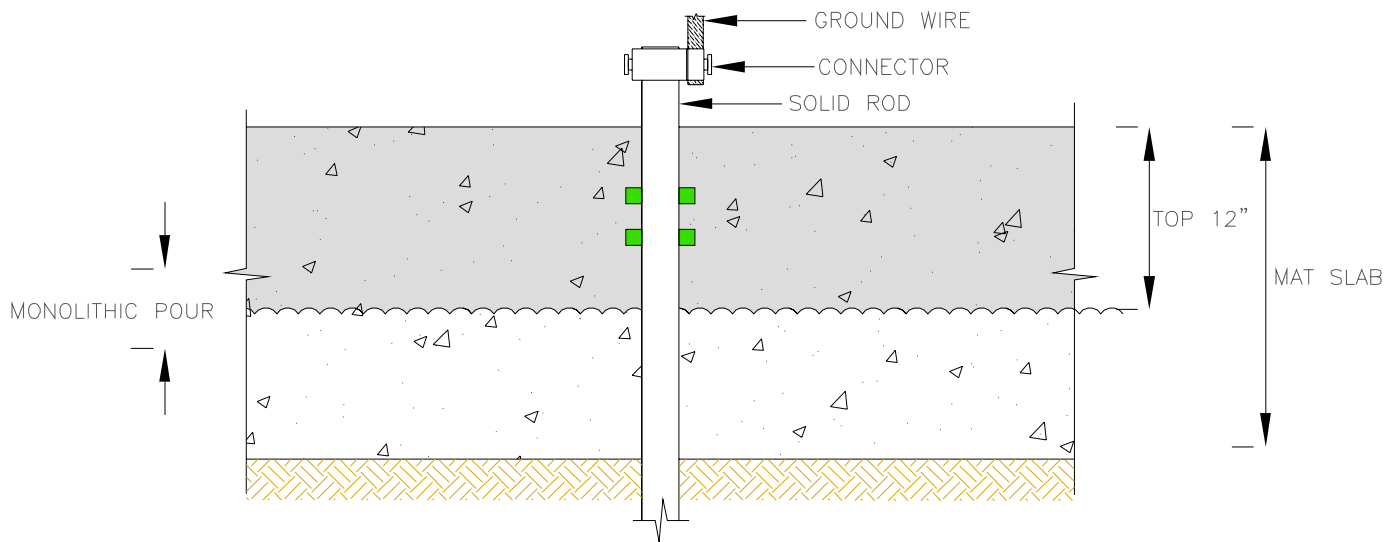
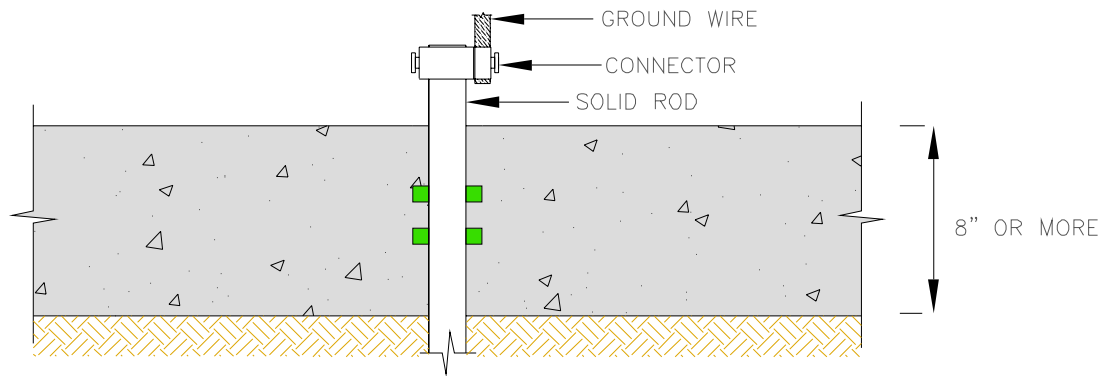
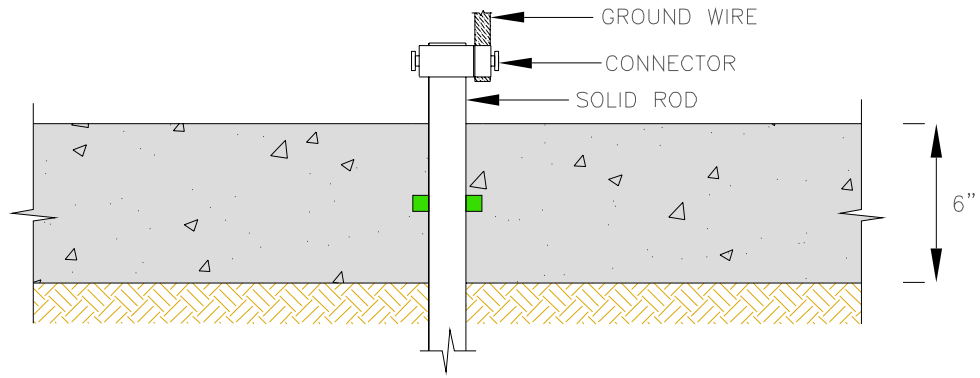
Hycrete details illustrate generic construction guidelines. They are intended for use by design/construction professionals, to assist in developing project-specific details. These should be modified where necessary to accommodate individual project conditions. The user maintains all responsibility for verifying the applicability and suitability of the technical service or information provided. Contact a Hycrete technical professional for assistance in project-specific requirements. Always refer to project specifications and local building codes for any special requirements.

© 2009 Hycrete, Inc. All rights reserved. The right to utilize Hycrete details for commercial purposes is granted exclusively to contractors, architects, quantity surveyors, engineers, waterproofing consultants, and specification writers. Hycrete™ is a registered trademark of Hycrete, Inc.

	HYCRETE360, HYCRETE ENDURE WP, HYCRETE ENDURE CP	
	DRAWING TITLE: MAT SLAB PENETRATION	
14 SPIELMAN RD. FAIRFIELD NJ. 07004. 201-386-8110 WWW.HYCRETE.COM	DRWN BY:FAZAL	DRAWING NUMBER: 001-B
	CHKD BY:NHM	NTS


HYDROPHILIC WATERSTOP

HYCRETE CONCRETE



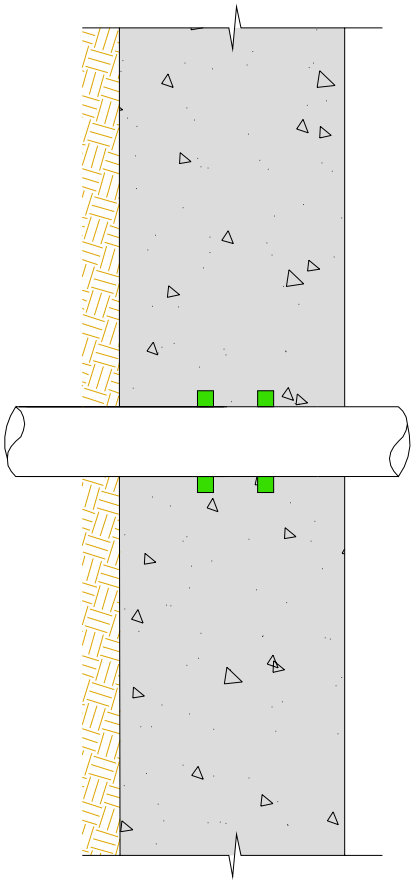
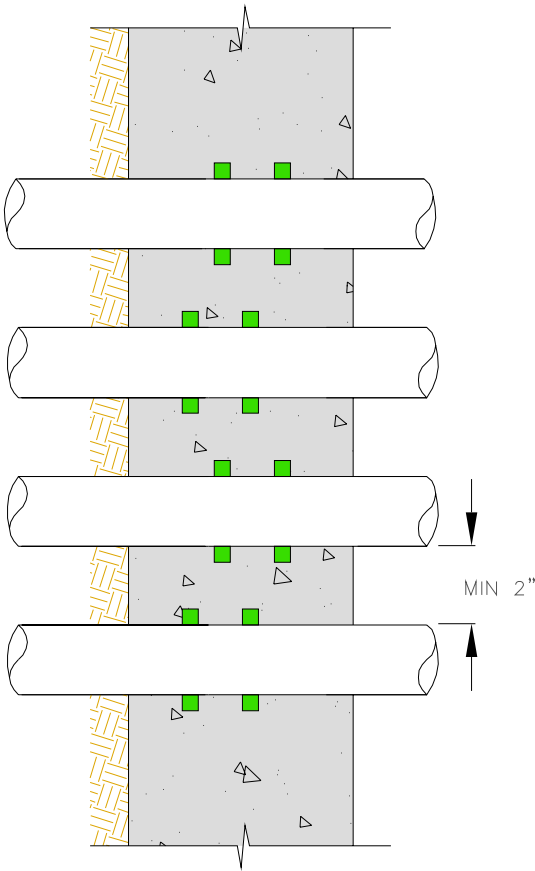
Hycrete details illustrate generic construction guidelines. They are intended for use by design/construction professionals, to assist in developing project-specific details. These should be modified where necessary to accommodate individual project conditions. The user maintains all responsibility for verifying the applicability and suitability of the technical service or information provided. Contact a Hycrete technical professional for assistance in project-specific requirements. Always refer to project specifications and local building codes for any special requirements.

© 2009 Hycrete, Inc. All rights reserved. The right to utilize Hycrete details for commercial purposes is granted exclusively to contractors, architects, quantity surveyors, engineers, waterproofing consultants, and specification writers. Hycrete™ is a registered trademark of Hycrete, Inc.

<b>Hycrete</b> 	HYCRETE360, HYCRETE ENDURE WP, HYCRETE ENDURE CP	
	DRAWING TITLE: GROUND WIRE DETAIL	
14 SPIELMAN RD. FAIRFIELD NJ. 07004. 201-386-8110 WWW.HYCRETE.COM	DRWN BY:FAZAL	DRAWING NUMBER: 001-C
	CHKD BY:NHM	NTS

HYDROPHILIC WATERSTOP


HYCRETE CONCRETE



CONGESTED PENETRATIONS

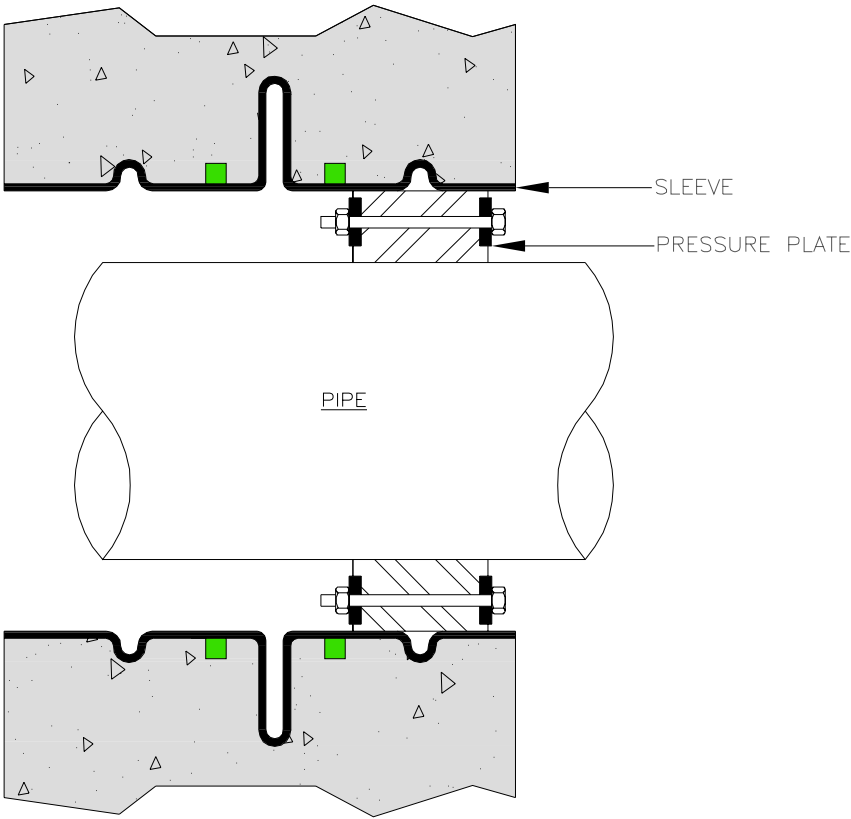
Hycrete details illustrate generic construction guidelines. They are intended for use by design/construction professionals, to assist in developing project-specific details. These should be modified where necessary to accommodate individual project conditions. The user maintains all responsibility for verifying the applicability and suitability of the technical service or information provided. Contact a Hycrete technical professional for assistance in project-specific requirements. Always refer to project specifications and local building codes for any special requirements.

© 2009 Hycrete, Inc. All rights reserved. The right to utilize Hycrete details for commercial purposes is granted exclusively to contractors, architects, quantity surveyors, engineers, waterproofing consultants, and specification writers. Hycrete™ is a registered trademark of Hycrete, Inc.

		HYCRETE360, HYCRETE ENDURE WP, HYCRETE ENDURE CP	
		DRAWING TITLE: WALL PENETRATION DETAIL	
14 SPIELMAN RD. FAIRFIELD NJ. 07004. 201-386-8110 WWW.HYCRETE.COM		DRWN BY:FAZAL	DRAWING NUMBER: 002
		CHKD BY:NHM	NTS


HYDROPHILIC WATERSTOP

HYCRETE CONCRETE

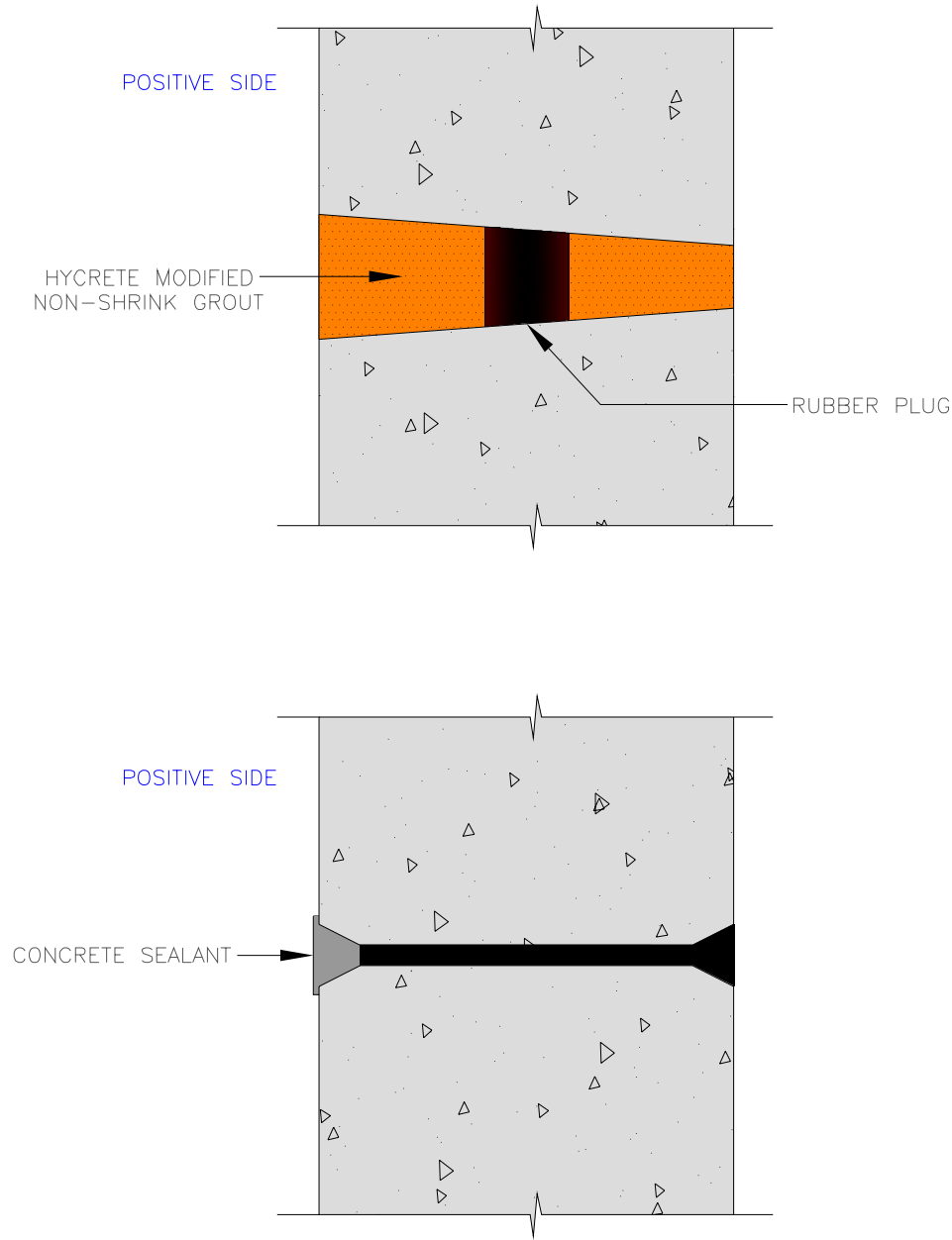


PLEASE FOLLOW UTILITY SLEEVE MANUFACTURER  
RECOMMENDATIONS FOR INSTALLATION

Hycrete details illustrate generic construction guidelines. They are intended for use by design/construction professionals, to assist in developing project-specific details. These should be modified where necessary to accommodate individual project conditions. The user maintains all responsibility for verifying the applicability and suitability of the technical service or information provided. Contact a Hycrete technical professional for assistance in project-specific requirements. Always refer to project specifications and local building codes for any special requirements.  
© 2009 Hycrete, Inc. All rights reserved. The right to utilize Hycrete details for commercial purposes is granted exclusively to contractors, architects, quantity surveyors, engineers, waterproofing consultants, and specification writers. Hycrete™ is a registered trademark of Hycrete, Inc.


	HYCRETE360, HYCRETE ENDURE WP, HYCRETE ENDURE CP	
	DRAWING TITLE: LINK SEAL DETAIL	
14 SPIELMAN RD, FAIRFIELD NJ, 07004, 201-386-8110 WWW.HYCRETE.COM	DRWN BY:FAZAL	DRAWING NUMBER: 002-A
	CHKD BY:NHM	NTS

 HYCRETE CONCRETE



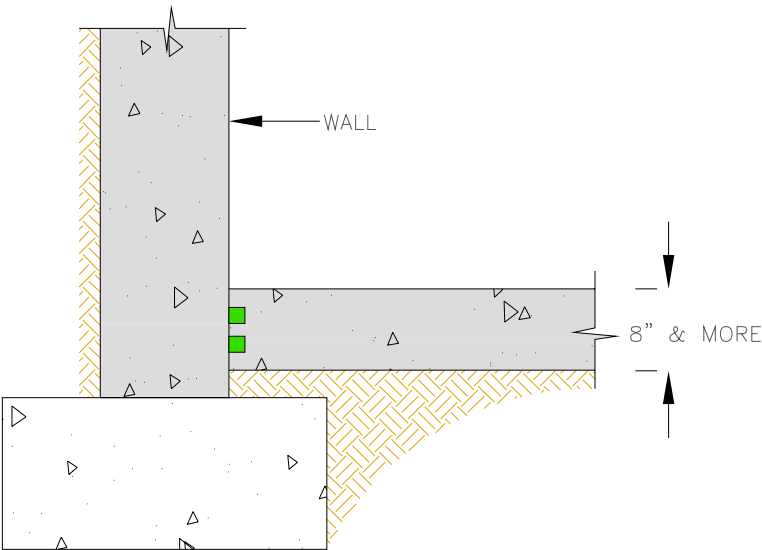
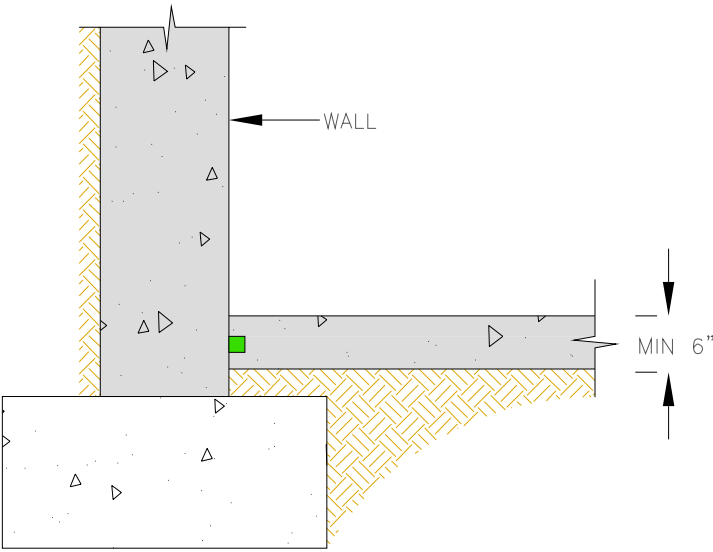
Hycrete details illustrate generic construction guidelines. They are intended for use by design/construction professionals, to assist in developing project-specific details. These should be modified where necessary to accommodate individual project conditions. The user maintains all responsibility for verifying the applicability and suitability of the technical service or information provided. Contact a Hycrete technical professional for assistance in project-specific requirements. Always refer to project specifications and local building codes for any special requirements.

© 2009 Hycrete, Inc. All rights reserved. The right to utilize Hycrete details for commercial purposes is granted exclusively to contractors, architects, quantity surveyors, engineers, waterproofing consultants, and specification writers. Hycrete™ is a registered trademark of Hycrete, Inc.

	HYCRETE360, HYCRETE ENDURE WP, HYCRETE ENDURE CP	
	DRAWING TITLE: TAPERED TIE HOLE & SNAP TIE DETAIL	
	14 SPIELMAN RD. FAIRFIELD NJ. 07004. 201-386-8110 WWW.HYCRETE.COM	
	DRWN BY:FAZAL	DRAWING NUMBER: 002-B
	CHKD BY:NHM	NTS


 HYDROPHILIC WATERSTOP

 HYCRETE CONCRETE



Hycrete details illustrate generic construction guidelines. They are intended for use by design/construction professionals, to assist in developing project-specific details. These should be modified where necessary to accommodate individual project conditions. The user maintains all responsibility for verifying the applicability and suitability of the technical service or information provided. Contact a Hycrete technical professional for assistance in project-specific requirements. Always refer to project specifications and local building codes for any special requirements.

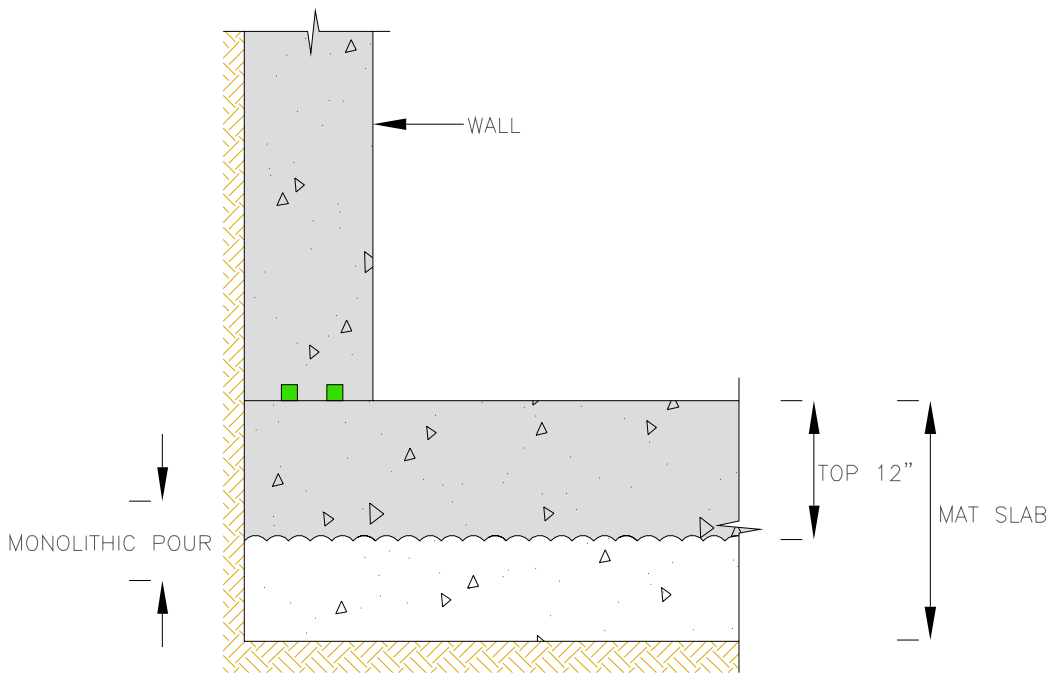
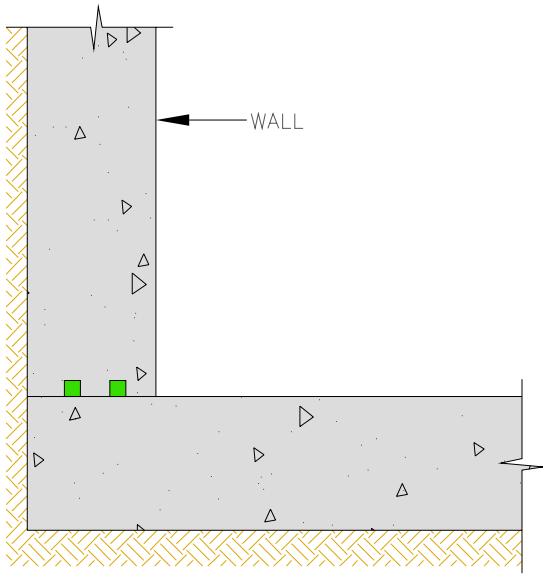
© 2009 Hycrete, Inc. All rights reserved. The right to utilize Hycrete details for commercial purposes is granted exclusively to contractors, architects, quantity surveyors, engineers, waterproofing consultants, and specification writers. Hycrete™ is a registered trademark of Hycrete, Inc.

		HYCRETE360, HYCRETE ENDURE WP, HYCRETE ENDURE CP	
		DRAWING TITLE: FOUNDATION DETAIL	
14 SPIELMAN RD. FAIRFIELD NJ. 07004. 201-386-8110 WWW.HYCRETE.COM		DRWN BY:FAZAL	DRAWING NUMBER: 003
		CHKD BY:NHM	NTS




HYDROPHILIC WATERSTOP

HYCRETE CONCRETE



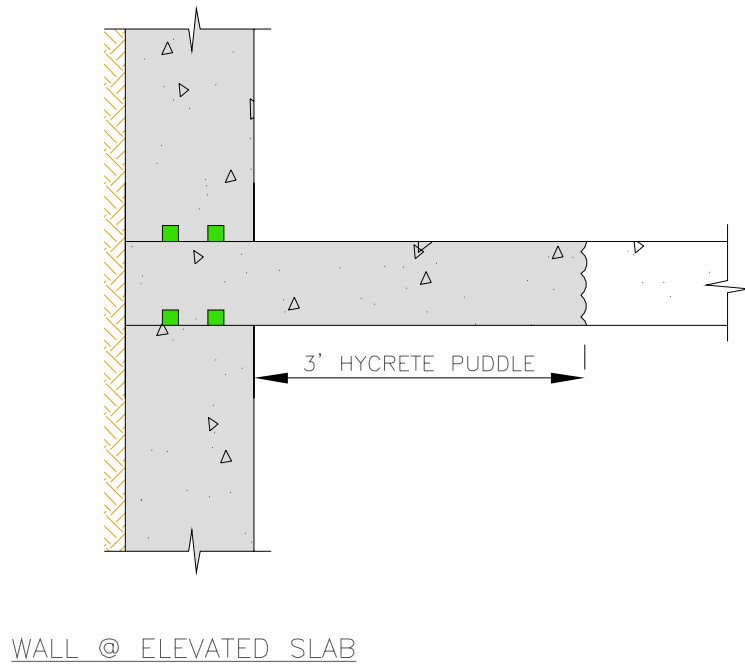
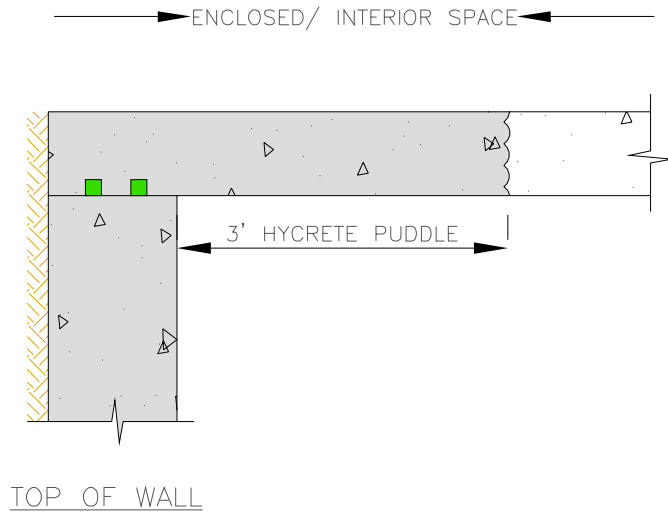
Hycrete details illustrate generic construction guidelines. They are intended for use by design/construction professionals, to assist in developing project-specific details. These should be modified where necessary to accommodate individual project conditions. The user maintains all responsibility for verifying the applicability and suitability of the technical service or information provided. Contact a Hycrete technical professional for assistance in project-specific requirements. Always refer to project specifications and local building codes for any special requirements.

© 2009 Hycrete, Inc. All rights reserved. The right to utilize Hycrete details for commercial purposes is granted exclusively to contractors, architects, quantity surveyors, engineers, waterproofing consultants, and specification writers. Hycrete™ is a registered trademark of Hycrete, Inc.

	HYCRETE360, HYCRETE ENDURE WP, HYCRETE ENDURE CP	
	DRAWING TITLE: FOUNDATION DETAIL	
	14 SPIELMAN RD. FAIRFIELD NJ. 07004. 201-386-8110 WWW.HYCRETE.COM	
	DRWN BY:FAZAL	DRAWING NUMBER: 003-A
	CHKD BY:NHM	NTS


 HYDROPHILIC WATERSTOP

 HYCRETE CONCRETE



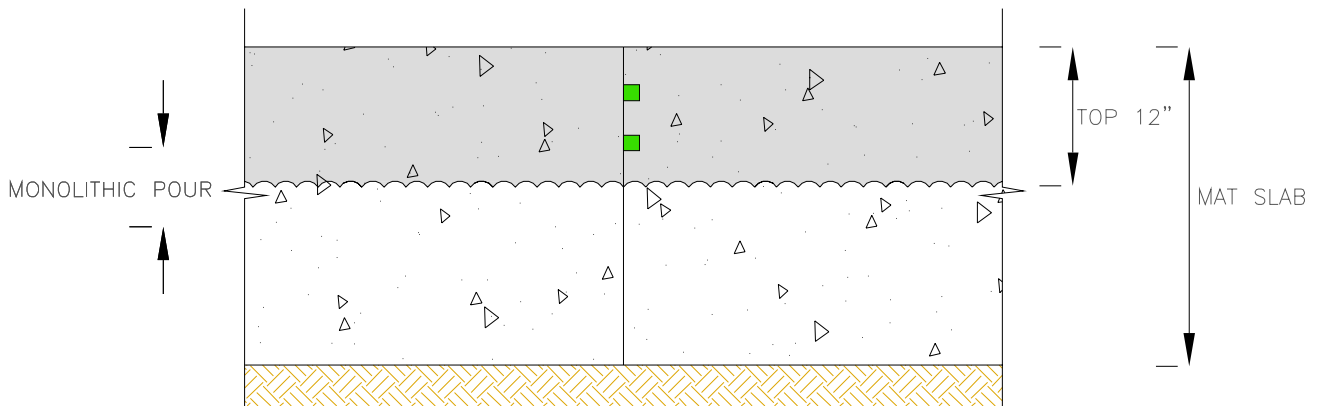
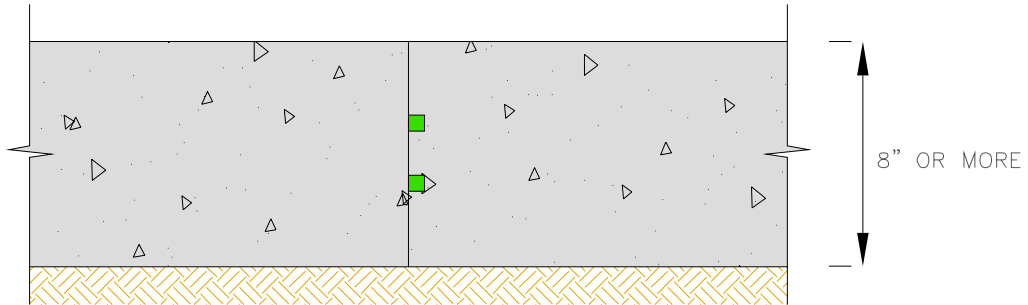
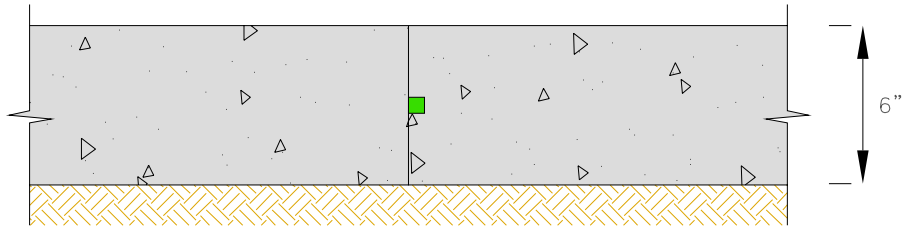
Hycrete details illustrate generic construction guidelines. They are intended for use by design/construction professionals, to assist in developing project-specific details. These should be modified where necessary to accommodate individual project conditions. The user maintains all responsibility for verifying the applicability and suitability of the technical service or information provided. Contact a Hycrete technical professional for assistance in project-specific requirements. Always refer to project specifications and local building codes for any special requirements.

© 2009 Hycrete, Inc. All rights reserved. The right to utilize Hycrete details for commercial purposes is granted exclusively to contractors, architects, quantity surveyors, engineers, waterproofing consultants, and specification writers. Hycrete™ is a registered trademark of Hycrete, Inc.


	HYCRETE360, HYCRETE ENDURE WP, HYCRETE ENDURE CP	
	DRAWING TITLE: FOUNDATION DETAIL	
14 SPIELMAN RD, FAIRFIELD NJ, 07004, 201-386-8110 WWW.HYCRETE.COM	DRWN BY:FAZAL	DRAWING NUMBER: 003-B
	CHKD BY:NHM	NTS

HYDROPHILIC WATERSTOP

HYCRETE CONCRETE

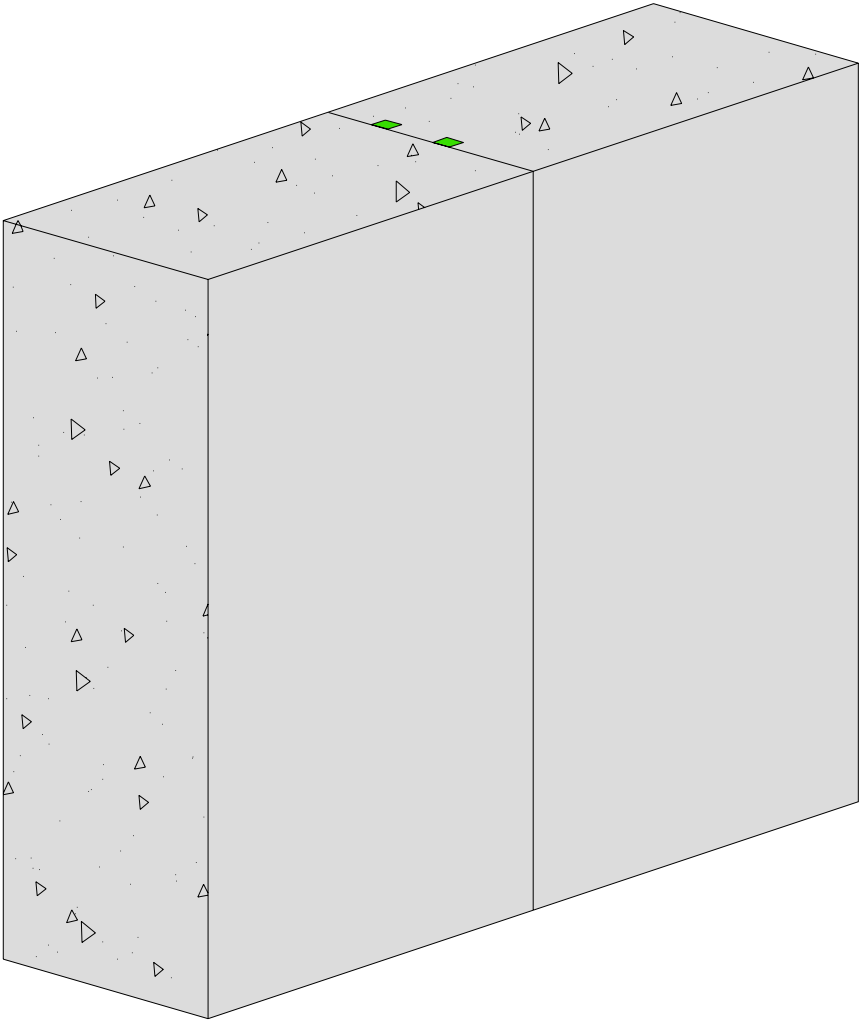


Hycrete details illustrate generic construction guidelines. They are intended for use by design/construction professionals, to assist in developing project-specific details. These should be modified where necessary to accommodate individual project conditions. The user maintains all responsibility for verifying the applicability and suitability of the technical service or information provided. Contact a Hycrete technical professional for assistance in project-specific requirements. Always refer to project specifications and local building codes for any special requirements.  
© 2009 Hycrete, Inc. All rights reserved. The right to utilize Hycrete details for commercial purposes is granted exclusively to contractors, architects, quantity surveyors, engineers, waterproofing consultants, and specification writers. Hycrete™ is a registered trademark of Hycrete, Inc.


	HYCRETE360, HYCRETE ENDURE WP, HYCRETE ENDURE CP	
	DRAWING TITLE: CONSTRUCTION JOINT @ SLAB	
14 SPIELMAN RD. FAIRFIELD NJ. 07004. 201-386-8110 WWW.HYCRETE.COM	DRWN BY:FAZAL	DRAWING NUMBER: 004
	CHKD BY:NHM	NTS

 HYDROPHILIC WATERSTOP

 HYCRETE CONCRETE

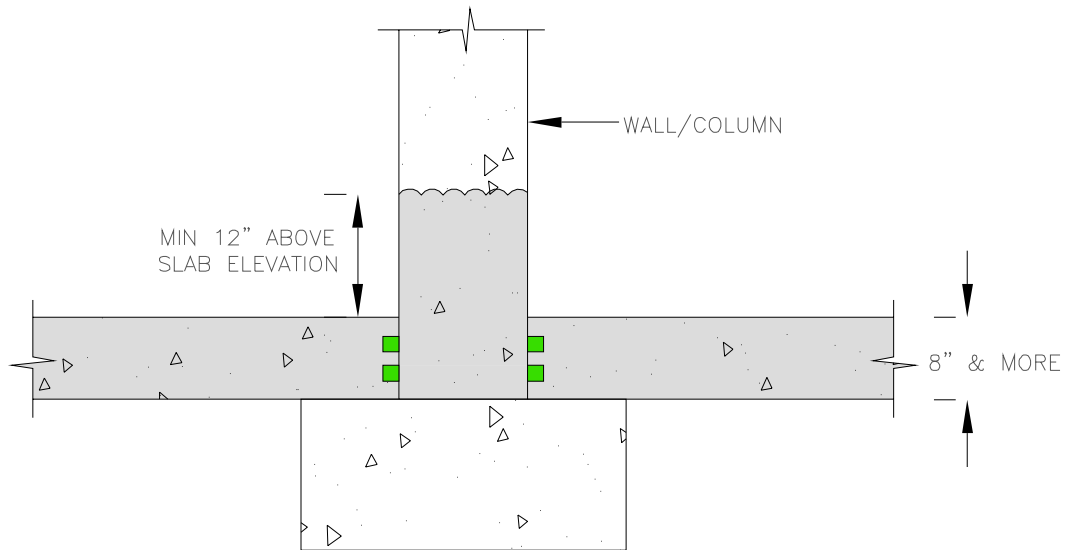
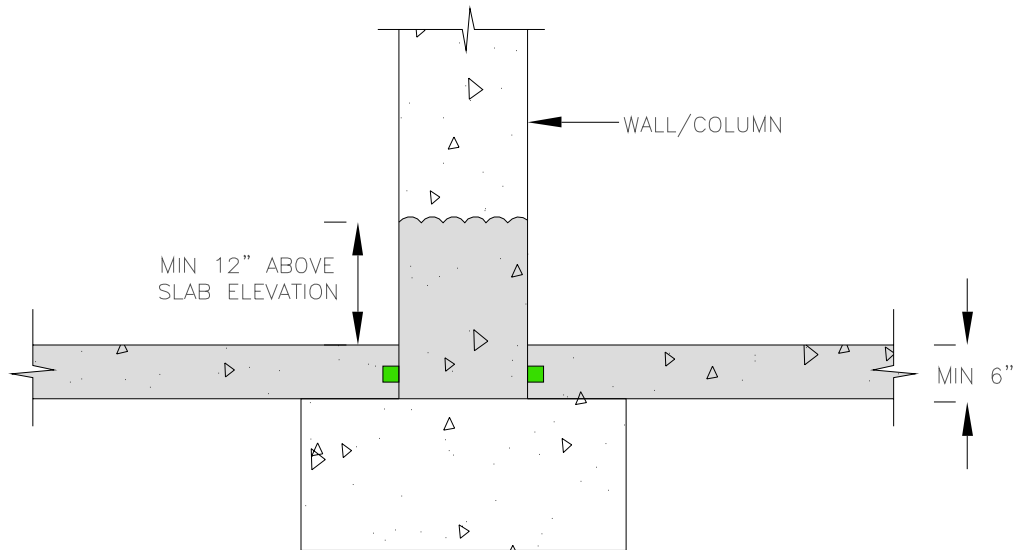


Hycrete details illustrate generic construction guidelines. They are intended for use by design/construction professionals, to assist in developing project-specific details. These should be modified where necessary to accommodate individual project conditions. The user maintains all responsibility for verifying the applicability and suitability of the technical service or information provided. Contact a Hycrete technical professional for assistance in project-specific requirements. Always refer to project specifications and local building codes for any special requirements.  
© 2009 Hycrete, Inc. All rights reserved. The right to utilize Hycrete details for commercial purposes is granted exclusively to contractors, architects, quantity surveyors, engineers, waterproofing consultants, and specification writers. Hycrete™ is a registered trademark of Hycrete, Inc.


		HYCRETE360, HYCRETE ENDURE WP, HYCRETE ENDURE CP	
		DRAWING TITLE: VERTICAL WALL JOINT	
14 SPIELMAN RD. FAIRFIELD NJ. 07004. 201-386-8110 WWW.HYCRETE.COM		DRWN BY:FAZAL	DRAWING NUMBER: 004-A
		CHKD BY:NHM	NTS

 HYDROPHILIC WATERSTOP

 HYCRETE CONCRETE

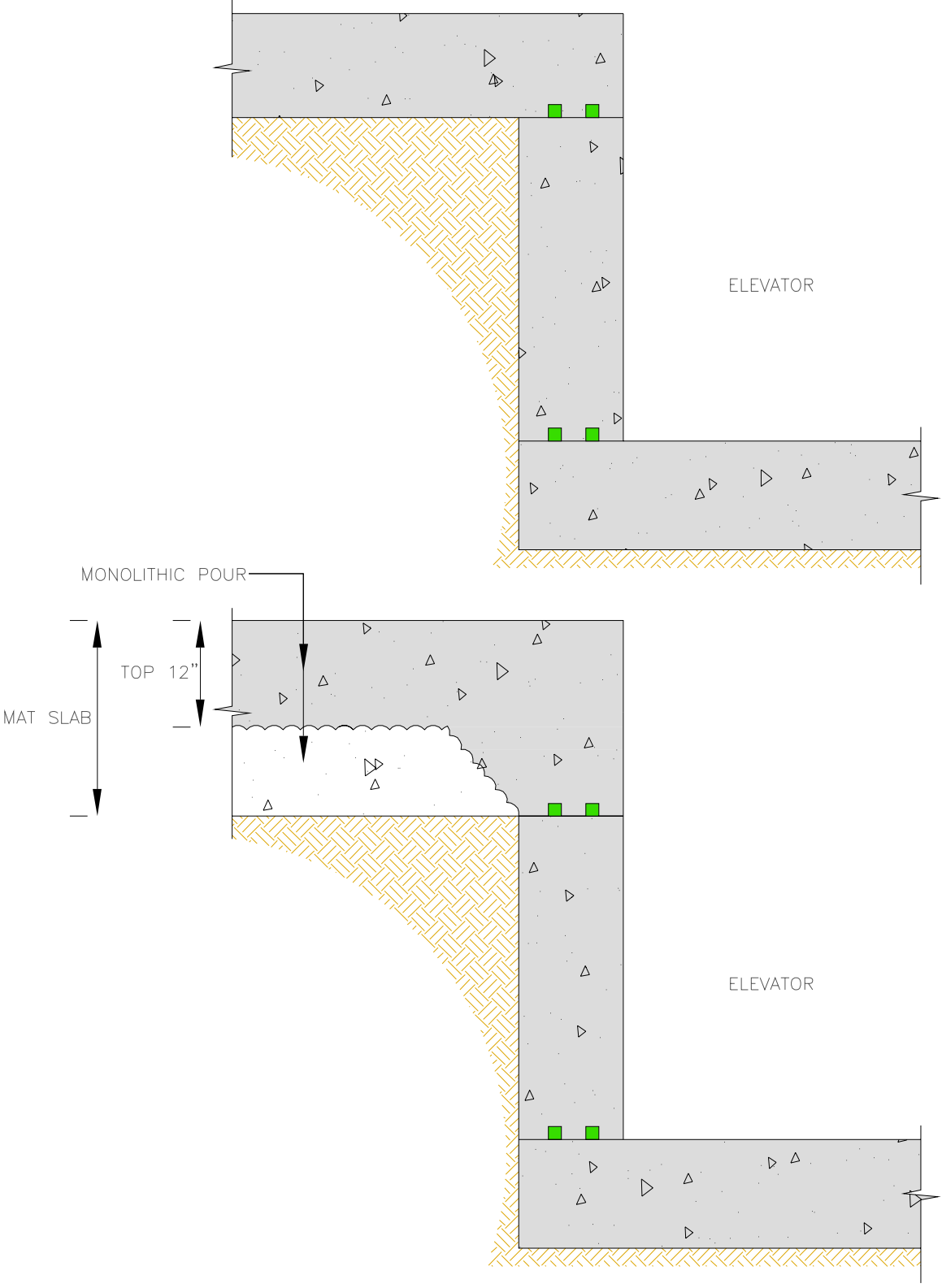


Hycrete details illustrate generic construction guidelines. They are intended for use by design/construction professionals, to assist in developing project-specific details. These should be modified where necessary to accommodate individual project conditions. The user maintains all responsibility for verifying the applicability and suitability of the technical service or information provided. Contact a Hycrete technical professional for assistance in project-specific requirements. Always refer to project specifications and local building codes for any special requirements.  
© 2009 Hycrete, Inc. All rights reserved. The right to utilize Hycrete details for commercial purposes is granted exclusively to contractors, architects, quantity surveyors, engineers, waterproofing consultants, and specification writers. Hycrete™ is a registered trademark of Hycrete, Inc.

	HYCRETE360, HYCRETE ENDURE WP, HYCRETE ENDURE CP	
	DRAWING TITLE: COLUMN-FOOTING	
14 SPIELMAN RD. FAIRFIELD NJ. 07004. 201-386-8110 WWW.HYCRETE.COM	DRWN BY:FAZAL	DRAWING NUMBER: 005
	CHKD BY:NHM	NTS


HYDROPHILIC WATERSTOP

HYCRETE CONCRETE



Hycrete details illustrate generic construction guidelines. They are intended for use by design/construction professionals, to assist in developing project-specific details. These should be modified where necessary to accommodate individual project conditions. The user maintains all responsibility for verifying the applicability and suitability of the technical service or information provided. Contact a Hycrete technical professional for assistance in project-specific requirements. Always refer to project specifications and local building codes for any special requirements.

© 2009 Hycrete, Inc. All rights reserved. The right to utilize Hycrete details for commercial purposes is granted exclusively to contractors, architects, quantity surveyors, engineers, waterproofing consultants, and specification writers. Hycrete™ is a registered trademark of Hycrete, Inc.



HYCRETE360, HYCRETE ENDURE WP,  
HYCRETE ENDURE CP

DRAWING TITLE:  
ELEVATOR

14 SPIELMAN RD., FAIRFIELD  
NJ, 07004.  
201-386-8110  
WWW.HYCRETE.COM

DRWN BY:FAZAL

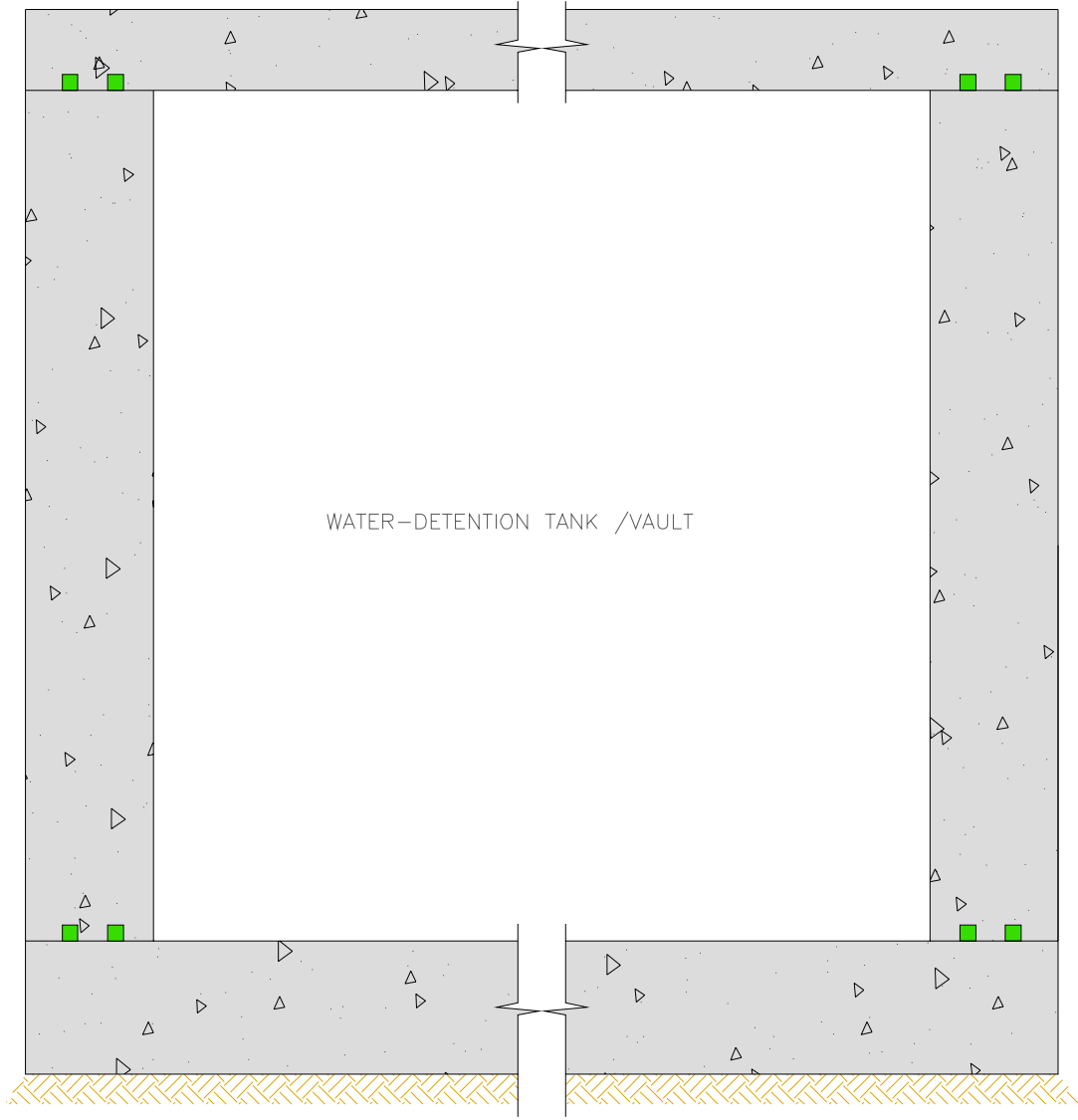
CHKD BY:NHM

DRAWING NUMBER:  
005-A

NTS


 HYDROPHILIC WATERSTOP

 HYCRETE CONCRETE



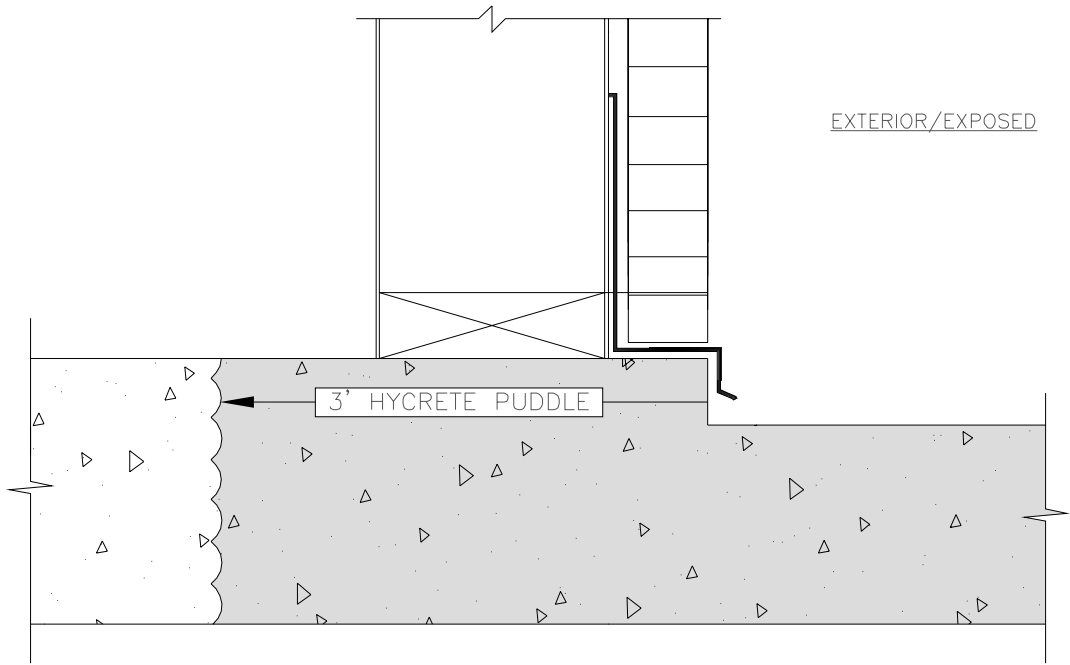
Hycrete details illustrate generic construction guidelines. They are intended for use by design/construction professionals, to assist in developing project-specific details. These should be modified where necessary to accommodate individual project conditions. The user maintains all responsibility for verifying the applicability and suitability of the technical service or information provided. Contact a Hycrete technical professional for assistance in project-specific requirements. Always refer to project specifications and local building codes for any special requirements.

© 2009 Hycrete, Inc. All rights reserved. The right to utilize Hycrete details for commercial purposes is granted exclusively to contractors, architects, quantity surveyors, engineers, waterproofing consultants, and specification writers. Hycrete™ is a registered trademark of Hycrete, Inc.


	HYCRETE360, HYCRETE ENDURE WP, HYCRETE ENDURE CP	
	DRAWING TITLE: WATER DETENTION TANK / VAULT	
	14 SPIELMAN RD. FAIRFIELD NJ. 07004. 201-386-8110 WWW.HYCRETE.COM	DRWN BY:FAZAL CHKD BY:NHM
DRAWING NUMBER: 005-B		NTS

HYDROPHILIC WATERSTOP

HYCRETE CONCRETE



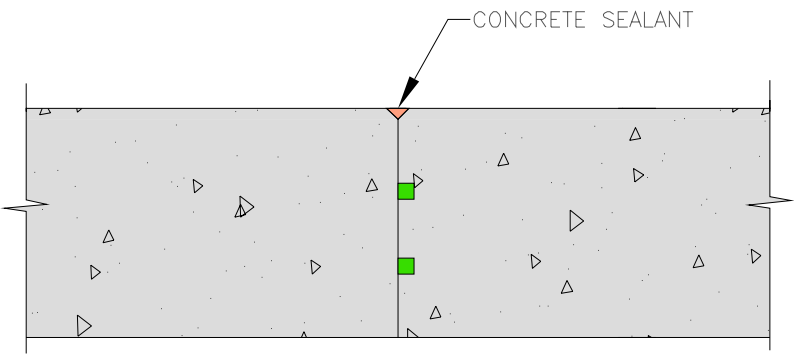
Hycrete details illustrate generic construction guidelines. They are intended for use by design/construction professionals, to assist in developing project-specific details. These should be modified where necessary to accommodate individual project conditions. The user maintains all responsibility for verifying the applicability and suitability of the technical service or information provided. Contact a Hycrete technical professional for assistance in project-specific requirements. Always refer to project specifications and local building codes for any special requirements.  
© 2009 Hycrete, Inc. All rights reserved. The right to utilize Hycrete details for commercial purposes is granted exclusively to contractors, architects, quantity surveyors, engineers, waterproofing consultants, and specification writers. Hycrete™ is a registered trademark of Hycrete, Inc.

	HYCRETE360, HYCRETE ENDURE WP, HYCRETE ENDURE CP	
	DRAWING TITLE: PLAZA EXTEIOR-INTERIOR TRANSITION	
14 SPIELMAN RD. FAIRFIELD NJ. 07004. 201-386-8110 WWW.HYCRETE.COM	DRWN BY:FAZAL	DRAWING NUMBER: 006
	CHKD BY:NHM	NTS




 HYDROPHILIC WATERSTOP

 HYCRETE CONCRETE



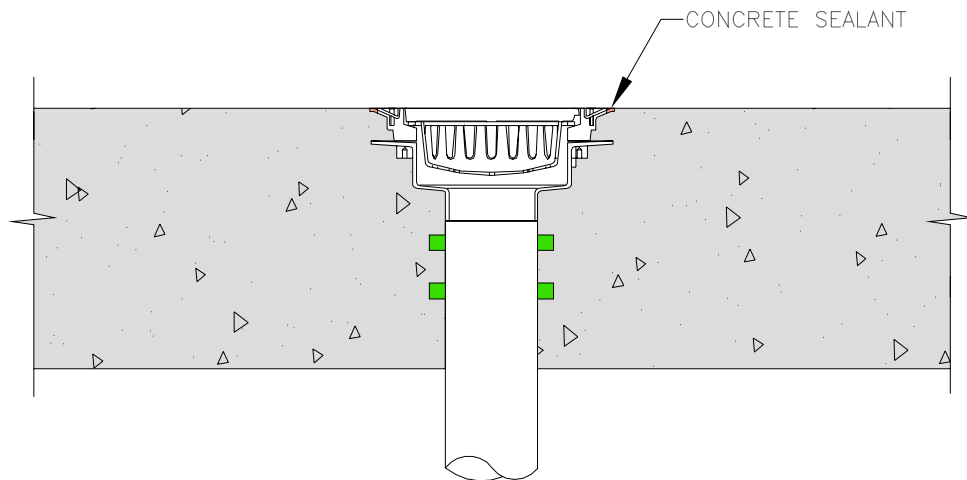
Hycrete details illustrate generic construction guidelines. They are intended for use by design/construction professionals, to assist in developing project-specific details. These should be modified where necessary to accommodate individual project conditions. The user maintains all responsibility for verifying the applicability and suitability of the technical service or information provided. Contact a Hycrete technical professional for assistance in project-specific requirements. Always refer to project specifications and local building codes for any special requirements.

© 2009 Hycrete, Inc. All rights reserved. The right to utilize Hycrete details for commercial purposes is granted exclusively to contractors, architects, quantity surveyors, engineers, waterproofing consultants, and specification writers. Hycrete™ is a registered trademark of Hycrete, Inc.


		HYCRETE360, HYCRETE ENDURE WP, HYCRETE ENDURE CP	
		DRAWING TITLE: PLAZA/COURT-YARD JOINT	
14 SPIELMAN RD. FAIRFIELD NJ. 07004. 201-386-8110 WWW.HYCRETE.COM		DRWN BY:FAZAL	DRAWING NUMBER: 006-A
		CHKD BY:NHM	NTS

 HYDROPHILIC WATERSTOP

 HYCRETE CONCRETE

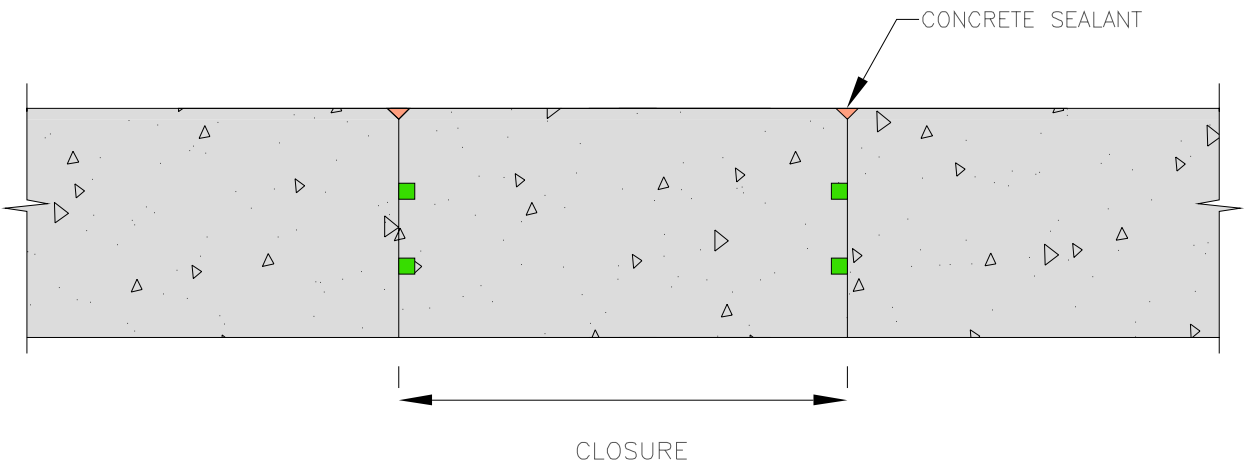


Hycrete details illustrate generic construction guidelines. They are intended for use by design/construction professionals, to assist in developing project-specific details. These should be modified where necessary to accommodate individual project conditions. The user maintains all responsibility for verifying the applicability and suitability of the technical service or information provided. Contact a Hycrete technical professional for assistance in project-specific requirements. Always refer to project specifications and local building codes for any special requirements.  
© 2009 Hycrete, Inc. All rights reserved. The right to utilize Hycrete details for commercial purposes is granted exclusively to contractors, architects, quantity surveyors, engineers, waterproofing consultants, and specification writers. Hycrete™ is a registered trademark of Hycrete, Inc.

	HYCRETE360, HYCRETE ENDURE WP, HYCRETE ENDURE CP	
	DRAWING TITLE: PLAZA/COURT-YARD DRAIN	
	14 SPIELMAN RD., FAIRFIELD NJ, 07004, 201-386-8110 WWW.HYCRETE.COM	
	DRWN BY:FAZAL	DRAWING NUMBER: 006-B
	CHKD BY:NHM	NTS


HYDROPHILIC WATERSTOP

HYCRETE CONCRETE

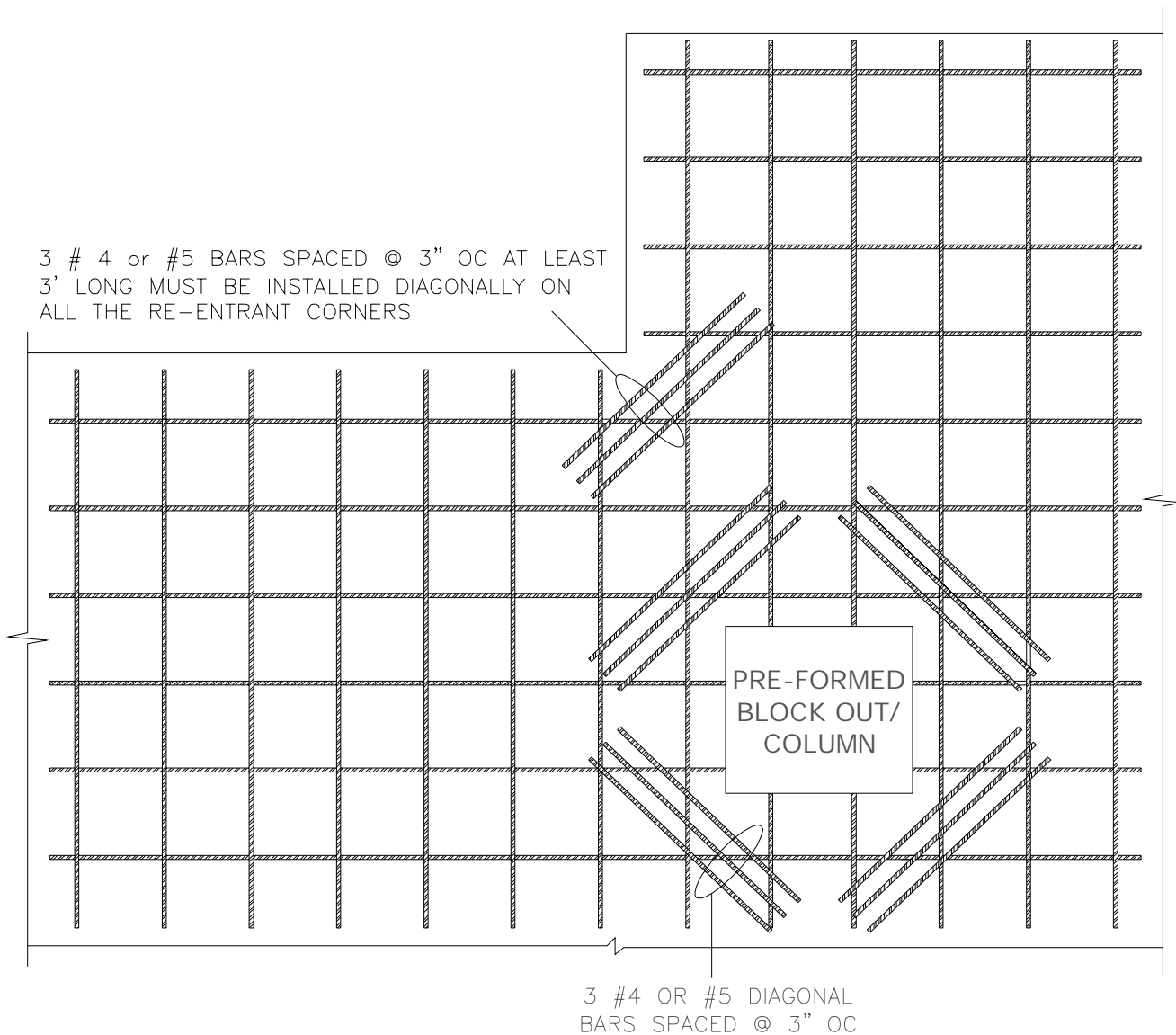


Hycrete details illustrate generic construction guidelines. They are intended for use by design/construction professionals, to assist in developing project-specific details. These should be modified where necessary to accommodate individual project conditions. The user maintains all responsibility for verifying the applicability and suitability of the technical service or information provided. Contact a Hycrete technical professional for assistance in project-specific requirements. Always refer to project specifications and local building codes for any special requirements.

© 2009 Hycrete, Inc. All rights reserved. The right to utilize Hycrete details for commercial purposes is granted exclusively to contractors, architects, quantity surveyors, engineers, waterproofing consultants, and specification writers. Hycrete™ is a registered trademark of Hycrete, Inc.

	HYCRETE360, HYCRETE ENDURE WP, HYCRETE ENDURE CP	
	DRAWING TITLE: POST TENSIONED CLOSURE	
14 SPIELMAN RD. FAIRFIELD NJ. 07004. 201-386-8110 WWW.HYCRETE.COM	DRWN BY:FAZAL	DRAWING NUMBER: 006-C
	CHKD BY:NHM	NTS

3 # 4 or #5 BARS SPACED @ 3" OC AT LEAST  
3' LONG MUST BE INSTALLED DIAGONALLY ON  
ALL THE RE-ENTRANT CORNERS



Hycrete details illustrate generic construction guidelines. They are intended for use by design/construction professionals, to assist in developing project-specific details. These should be modified where necessary to accommodate individual project conditions. The user maintains all responsibility for verifying the applicability and suitability of the technical service or information provided. Contact a Hycrete technical professional for assistance in project-specific requirements. Always refer to project specifications and local building codes for any special requirements.  
© 2009 Hycrete, Inc. All rights reserved. The right to utilize Hycrete details for commercial purposes is granted exclusively to contractors, architects, quantity surveyors, engineers, waterproofing consultants, and specification writers. Hycrete™ is a registered trademark of Hycrete, Inc.

<b>Hycrete®</b>	HYCRETE360, HYCRETE ENDURE WP, HYCRETE ENDURE CP	
	DRAWING TITLE: RE-ENTRANT CORNER	
14 SPIELMAN RD. FAIRFIELD NJ. 07004. 201-386-8110 WWW.HYCRETE.COM	DRWN BY:FAZAL	DRAWING NUMBER: 007
	CHKD BY:NHM	NTS